

From Your Friends At



Welcome

To a New Way of Seeing Your Business

powered by

LOGIXBOARD

You Just Got Some New Technology

In partnership with Logixboard, we have launched a new software platform where you can see everything related to your shipments.



Visibility

One centralized hub for you to manage your entire operation. See your shipment data like never before.



Speed of Information

Real-time information regarding shipments and inventory, available 24/7.



Communication & Control

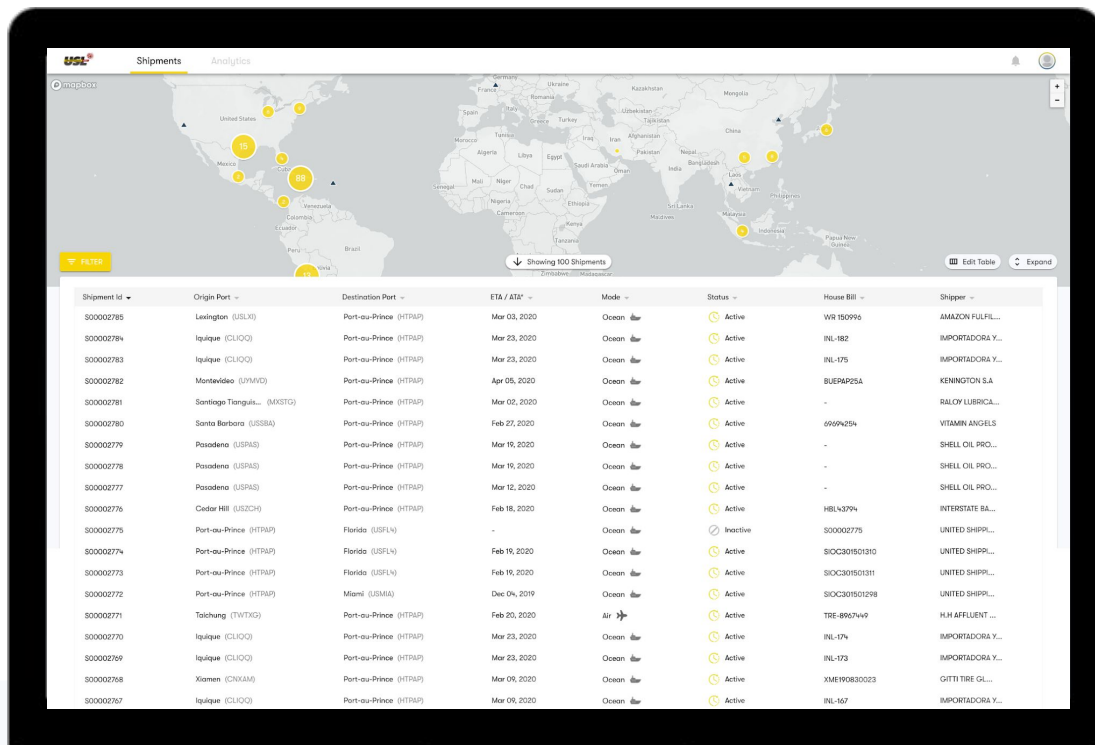
Interact with your team all in one user-friendly place. Control how you view the data with personalized dashboards.

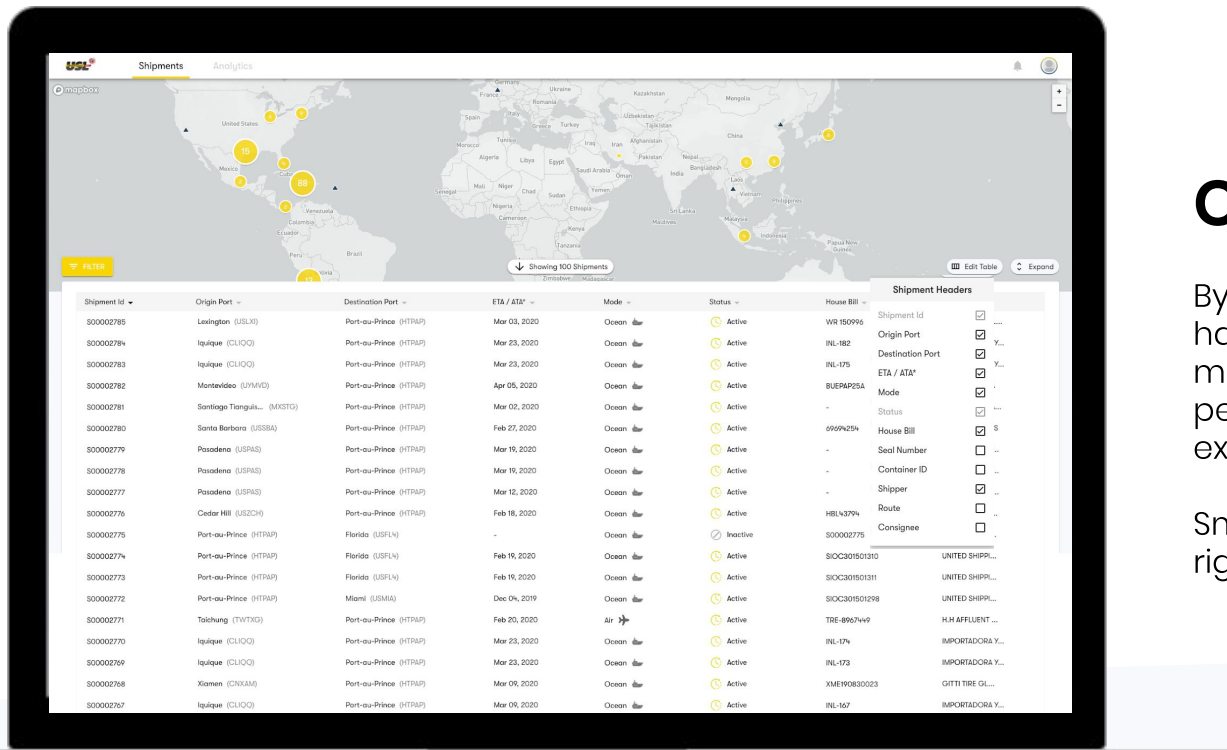
Shipments Command Center

A rich, interactive, landing experience, updated in real-time.

24/7 access to:

1. The status of your shipments.
2. Shipments you need to take action on.
3. Robust filtering and sorting to find the shipments you care about most.





Customizable UI

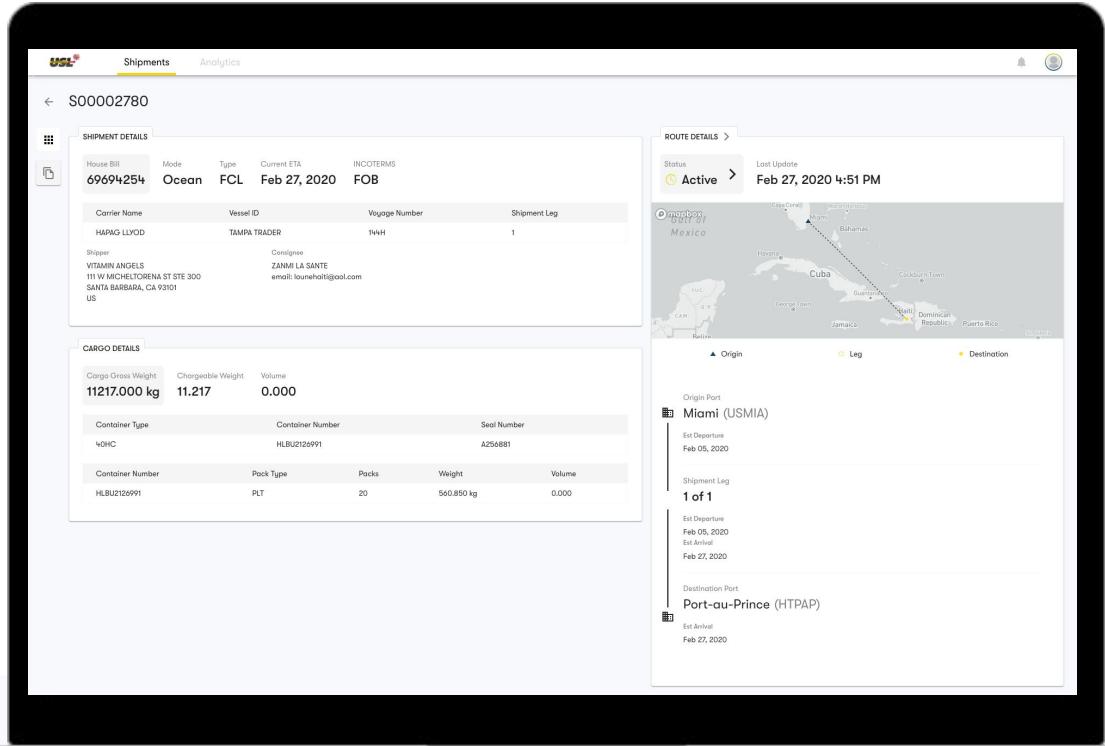
By "UI" we mean User Interface. You have a lot of data to manage, so we make it easy for you to view, and personalize, your dashboard experience.

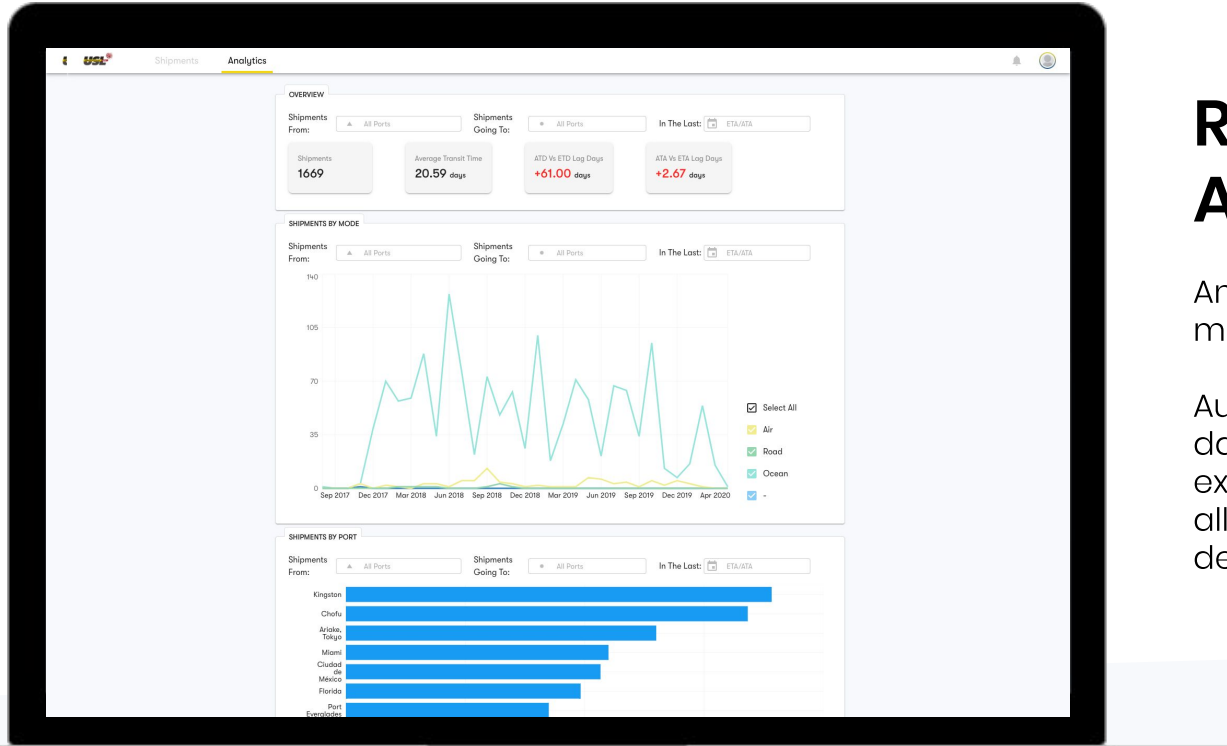
Smart defaults always ensure the right information is at your fingertips.

Shipment Details Page

Ready to learn more about a specific shipment? That's what the shipment details page is for.

View shipment details such as status, ETA/ATA, carrier information, Cargo information, as well as all documents related to a shipment.





Robust Shipment Analytics

Analytics for enhanced decision making.

Automated reports and custom dashboards enhance your experience with key analytics, allowing you to make more informed decisions.

The Outcomes

- Cloud-based Software, Accessible from Anywhere
- End-to-End Visibility and Management
- Automated Communication and Notifications
- Transparent, Structured Data and Reporting
- Operational Efficiency, Real-Time Data Transfer

And we're just getting started! We are actively building new features and functionality for you to get more productive...and excited about.

Great! How do I get started?

1. Your USL Global URL: <https://usl.logixboard.com>
2. We will email your username (username will be your email address) and password (temporary password, you'll be prompted to create a new one when you log in).
3. Log in!
4. Questions? Just email support@usl.ht or support@logixboard.com - we're here to help.

