

TIAGO R. CORREIA

M.arch.

index.

2



3

- 1. ABOUT US
- 2. WHAT WE DO
- 3. SELECTED WORK

about us.

4



Our journey "around here" is generally based on certain awareness of ourselves, our personality, our humor, our sadness, our place, our sensitivity and people around us.

When we reach a balance of those aspects we find lucidity, and this consciousness can be materialized in volumetries composed by constructive details, experimentation and fabrication of atmospheres, which in certain contexts may induce more or less intense sensations.

I like to think every project, or every place where we develop a project, there are several of hidden qualities. Each corner of the world has its own charm. With that in mind, whenever I come across a new project I try to discover these qualities and bring them to the surface, making them even better than they once were after the project is done.

Our practice works on all scale sources linked to architecture, from small to large scale projects. We intend to maintain in all of them, accuracy in details to promote quality in construction, and also favoring the sustainability of project.

That practice is committed to a continuous research base which allows flexibility and openness in the development of architecture projects.

–

Graduated in Architecture at University Lusíada of Lisbon and Master in Architecture and Urbanism at Université Libre of Brussels (ULB, LA CAMBRE).

Handwritten signature of Tiago R. Correia.

Tiago R. Correia
OA: 23599

–

5



"I like to think that every project, or every place where we will develop a project, there are a multitude of hidden qualities. Each corner of the world has its own charm."

What we do.

Tiago R. Correia Architects provides architecture and interior architecture services for residential, cultural, community and commercial clients. Our approach to design and delivery of projects is based on our ability to foster collaborative partnerships with our clients, specialist consultants and builders.

Architecture *

Our architectural design services range from early concepts through to full schematic design development and construction documentation. Each design solution is uniquely tailored to meet the specific needs of our client and their site. We work collaboratively with our consultant team and builders to manage quality, time and cost through each stage of the design and procurement process. We always provide comprehensive and honest advice to our clients to enable them to make informed decisions throughout the project.

In addition to core design services, we also manage planning permit applications and authority approvals on behalf of our clients, and produce 3D visualization and graphic presentation material for communication and marketing purposes.

Our practice is committed to the implementation of socially and environmentally responsible design. We offer our clients innovative and practical environmental design and urban design solutions that are site responsive and thoughtfully integrated into the building fabric.

Consulting *

In addition to our core design services, we offer a range of development services to provide our clients with a comprehensive understanding of key project opportunities, constraints and risks prior to the commencement of the design and development process.

These services include project feasibility studies, masterplanning, and management of planning permit applications and approvals.

We understand each development project must achieve specific time, cost and quality requirements, and we are more than happy to work alongside other specialist consultants and industry professionals to provide project specific design advice and solutions.

Post Services *

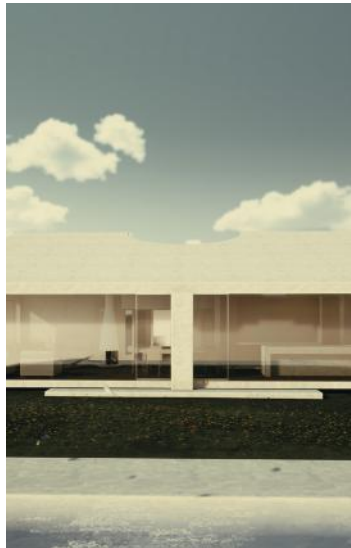
Our construction and post occupancy services include contract administration, construction phase consultancy and site inspections. These services are offered as part of our full architectural service or as a stand alone service structured to suit the particular needs of a client or project.

selected works.

8



Casa Marinha
"Low cost, High living"



RURAL HOUSE II
"Old Modern"



Lisbon Apartment
"Open dark spaces, and get back to life"



Rural House
"Enjoy the countryside, environment and landscape"

9



Lisbon Building Rehab.
"A historical building gets a new life"



Rural Tourism
"Searching for origins..."



Tofo House
"I was attracted by the curve — the liberated, sensual curve suggested new possibilities"



10

casa marinhais.

"Low cost, High living"

The owners were looking for architects to design a simple, low cost house where they could work and live. The house is located on the top of a plot that is an eucalyptus farm with an amazing view towards the Serra do Montejunto. Inspired in the old farm houses in center Portugal and the basic building premises of orientation.



11



Project
Family House

Client
Private

Situation
Built

Square meter
300





12

The houses that you see on the way here have roofs and tiles. This one has a flat cover. Flat but not horizontal.



13



14

rural house II

"old modern..."

The owners were looking for architects to design a simple, low cost house where they could work and live. The house is located on the top of a plot that is an eucalyptus farm with an amazing view towards the Serra do Montejunto. Inspired in the old farm houses in center Portugal and the basic building premises of orientation.



15



Project
Family House

Client
Private

Situation
Built

Square meter
300





lisbon apartment.

"Open dark spaces..."

This is an apartment remodulation project. The original apartment was divided by solid walls and each space was dark. It created the visual connections between each space to feel the other member of family. Though the same design language was used for furniture, walls and doors, proper details, illuminations and materials were used for each elements. It makes the design more human and accessible.



17



Project
Apartment

Client
Private

Situation
Built

Square meter
80



*In the simplest expression of "building in the built,"
there are several formulations that seek to describe
the specificity of rehabilitation practice.*



19

rural tourism.

"enjoy of countryside, the environment and the landscape"

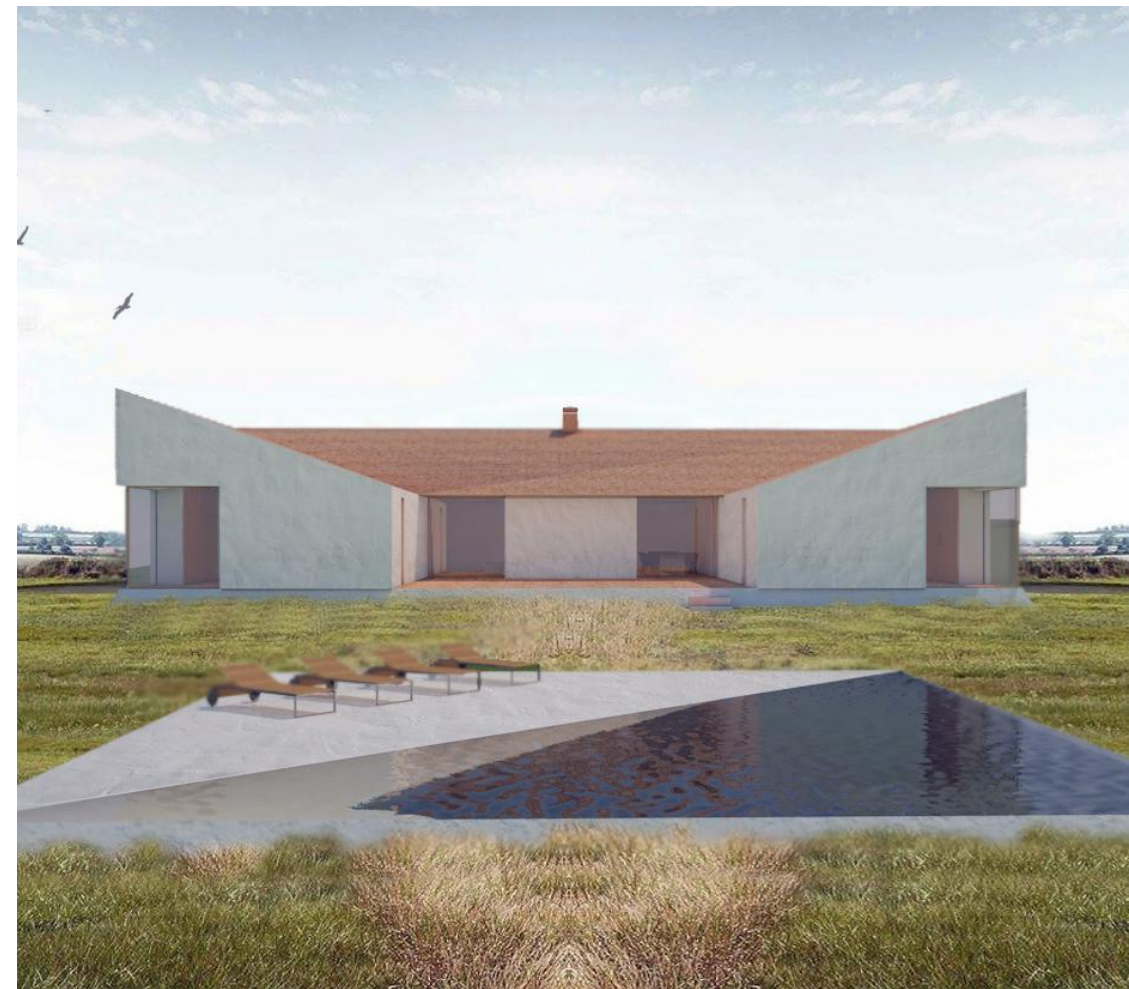
20



21



The house is very simple. It shaped the most basic archetypal sensations of a Mediterranean house. A house with a patio open to a view almost to the south, with water and a tree. It is built on a slope of the ground where the gentle slope intensifies a little.





Project
Tourism

Client
Private

Situation
on going

Square meter
1600





paço de arcos

"A historical building gets a new life."

In Paço de Arcos a fisherman village in the outskirts of Lisboa with an outstanding location by the river this renovation consists in a mix use program with a focus on housing. The building was collapsing and was in need of a surgical e urgent intervention.



25



Project
Apartment

Client
Private

Situation
Built

Square meter
80





rural tourism II.

"searching for the origins..."

The concept also extends to these buildings, we went to the origin of the Algarve Rural Architecture and reinterpreted, adapted to the present day. Our aim is to find a sculptural, minimalist solution, true to the essence. The place has defined the space we have to work. It creates various settings for art exhibition, creating a large living museum of the arts and rural practice.



Project
Rural tourism

Client
Private

Situation
Contest

Square meter
900





tofo house.

"I was attracted by the curve — the liberated, sensual curve suggested new possibilities"

Curved Floating House
The shape of the house is the most eye-catching and unusual detail. The curved walls evoke the beauty of the rippled and make the house perfectly integrate into the landscape. The façade of the house have two skins made of glass and white concrete, that allows amazing views. In addition to being eye-catching, the house is also sustainable, a detail that makes it even more interesting



28

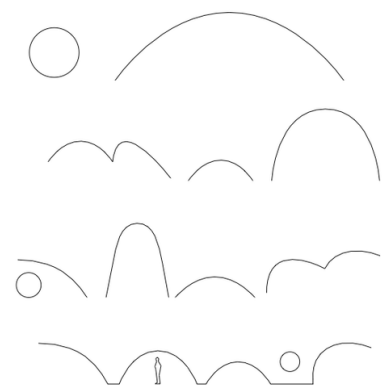
29

Project
House
Client
Private
Situation
Studies
Square meter
350





30



"My work is not about "form follows function," but
"form follows beauty" or, even better, "form follows
feminine..."



31



