

POPULAR SYSTEMS

**An IATF 16949:2016, ISO 9001:2015, ISO 14001:2015 & ISO 45001:2018
Certified organization**

Our Vision

Popular Systems aspires to be the most respected and highly preferred solution provider, by delighting the customers as a benchmark manufacturer, adding more value to products & services provided

Our Mission

Through our commitment to quality, constant innovation, environmental care, stakeholders enchantment and safety prioritization we aim to exceed and excel in all our endeavors.

INFRASTRUCTURE



25000 Sq.ft Work area
200+ Skilled employees

40+ Staff members
300+ machines

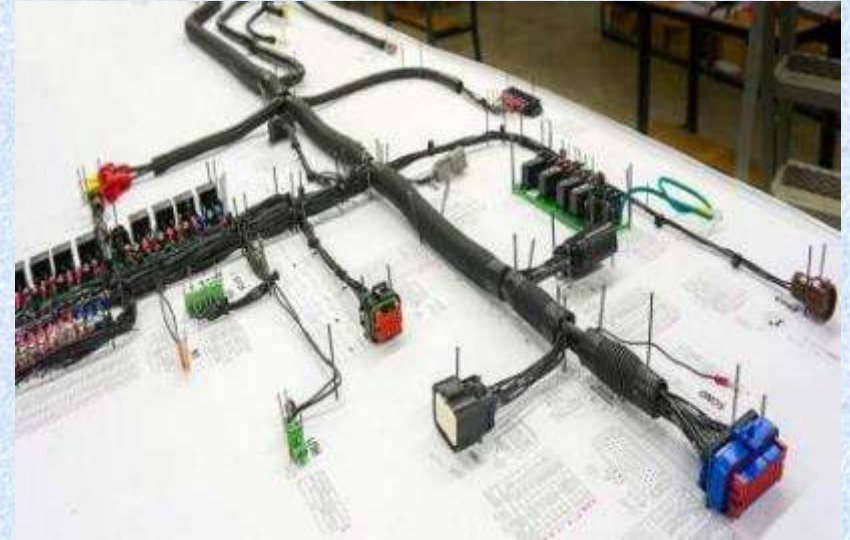
10 Million crimps per
month Capacity

PRODUCTS

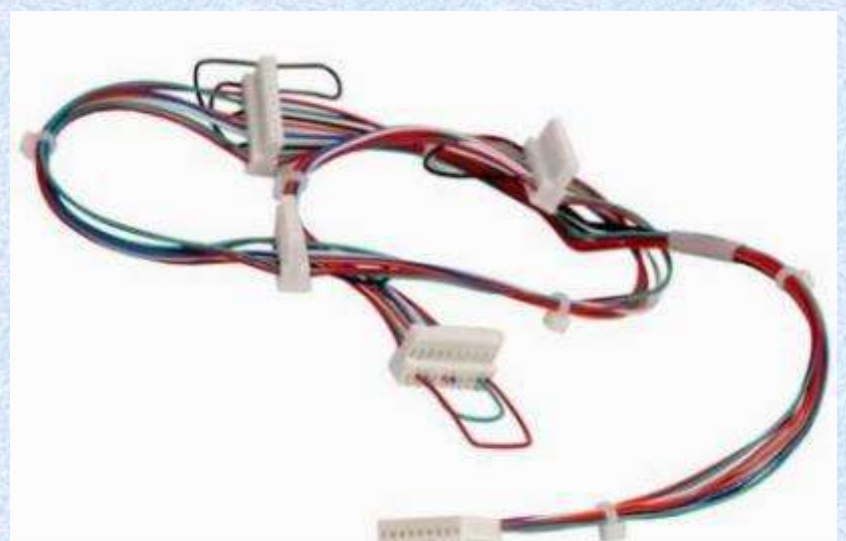
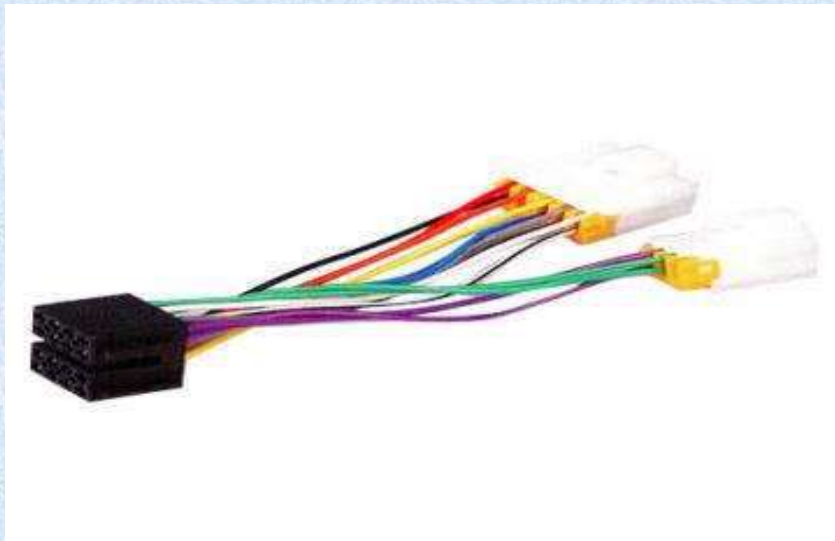
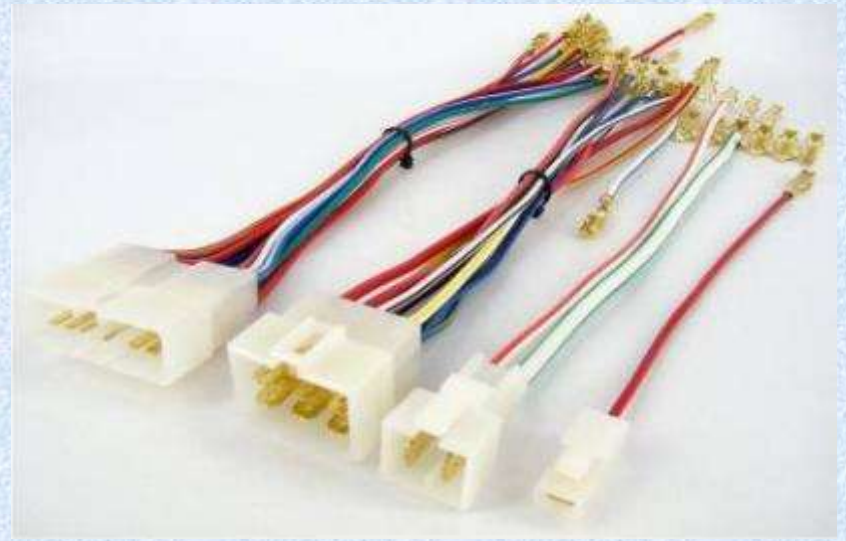
I. Wiring Harness

- **Automobile Wiring Harness**
- **Elevator and Escalator Wiring Harness**
- **Control Panel Wiring Harness**
- **Renewable Energy Wiring Harness**
- **Medical Equipment Wiring Harness**
- **Home Appliance Wiring Harness**
- **Data Cables**
- **UPS wiring Harness**
- **Defense wiring harness**
- **Fuel pump wiring harness**
- **Construction equipment wiring harness**

Automobile Wiring Harness



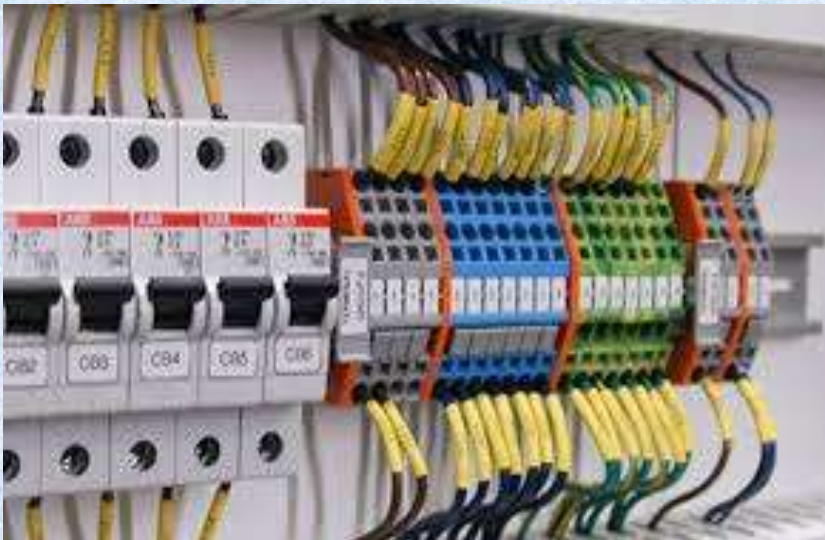
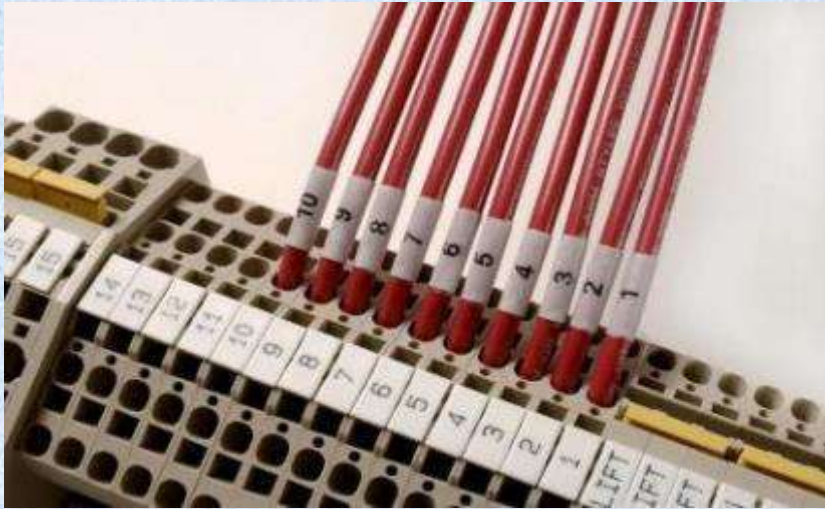
Car Audio harnesses



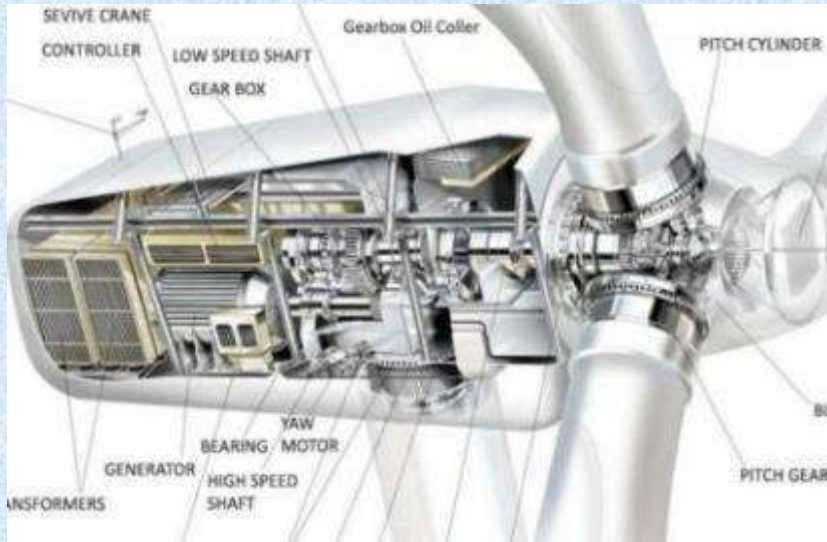
Elevator and Escalator Wiring Harness



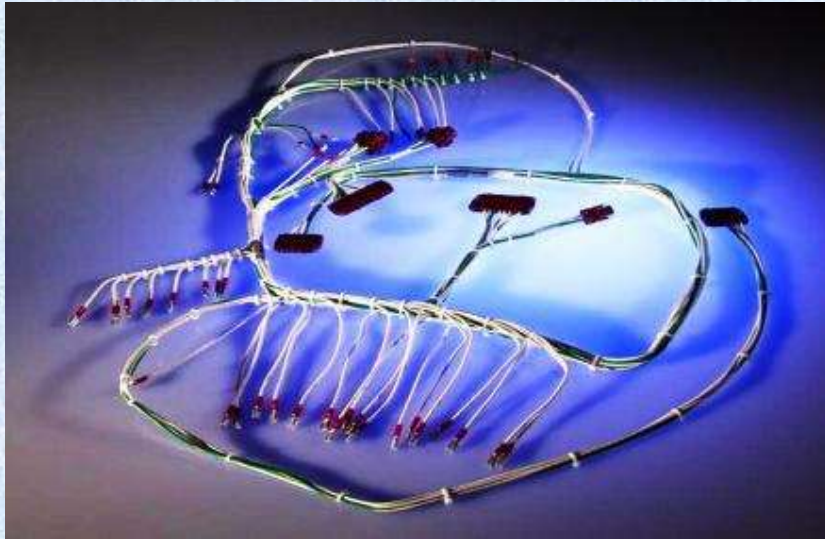
Control Panel wiring Harness



Renewable Energy Wiring Harness



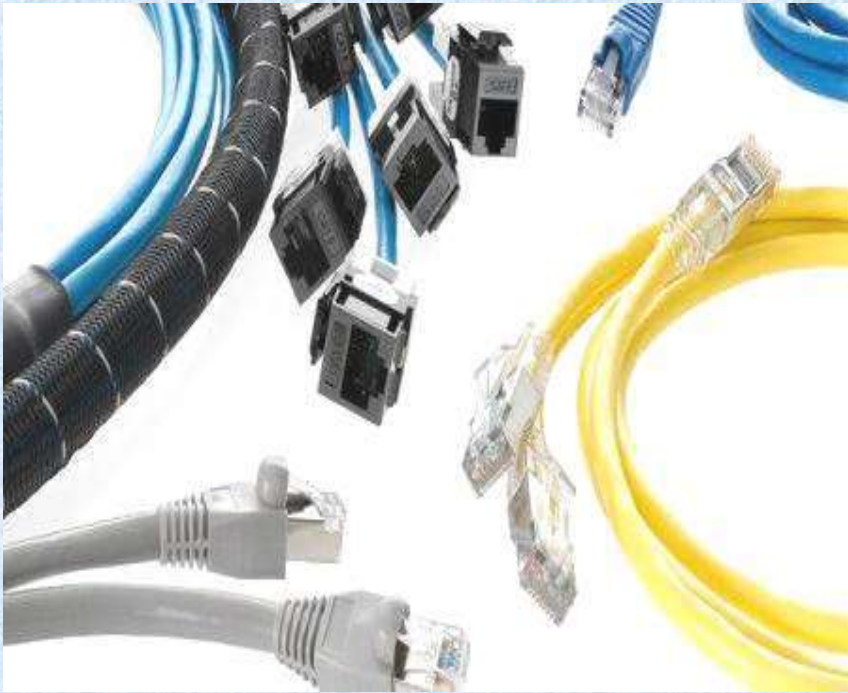
Medical Equipment Wiring Harness



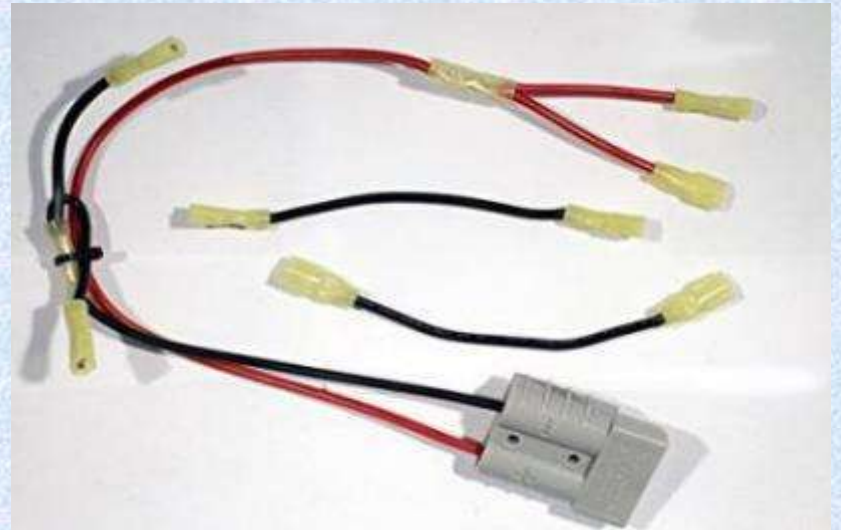
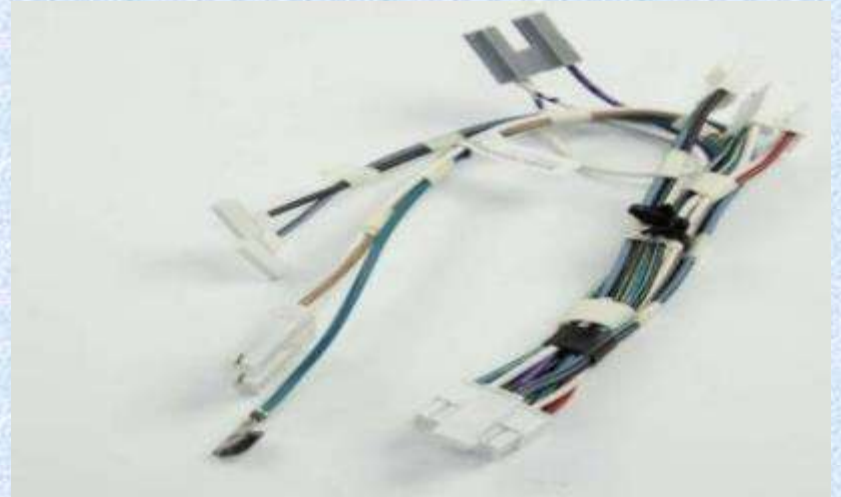
Home Appliance Wiring Harness



Data Cables



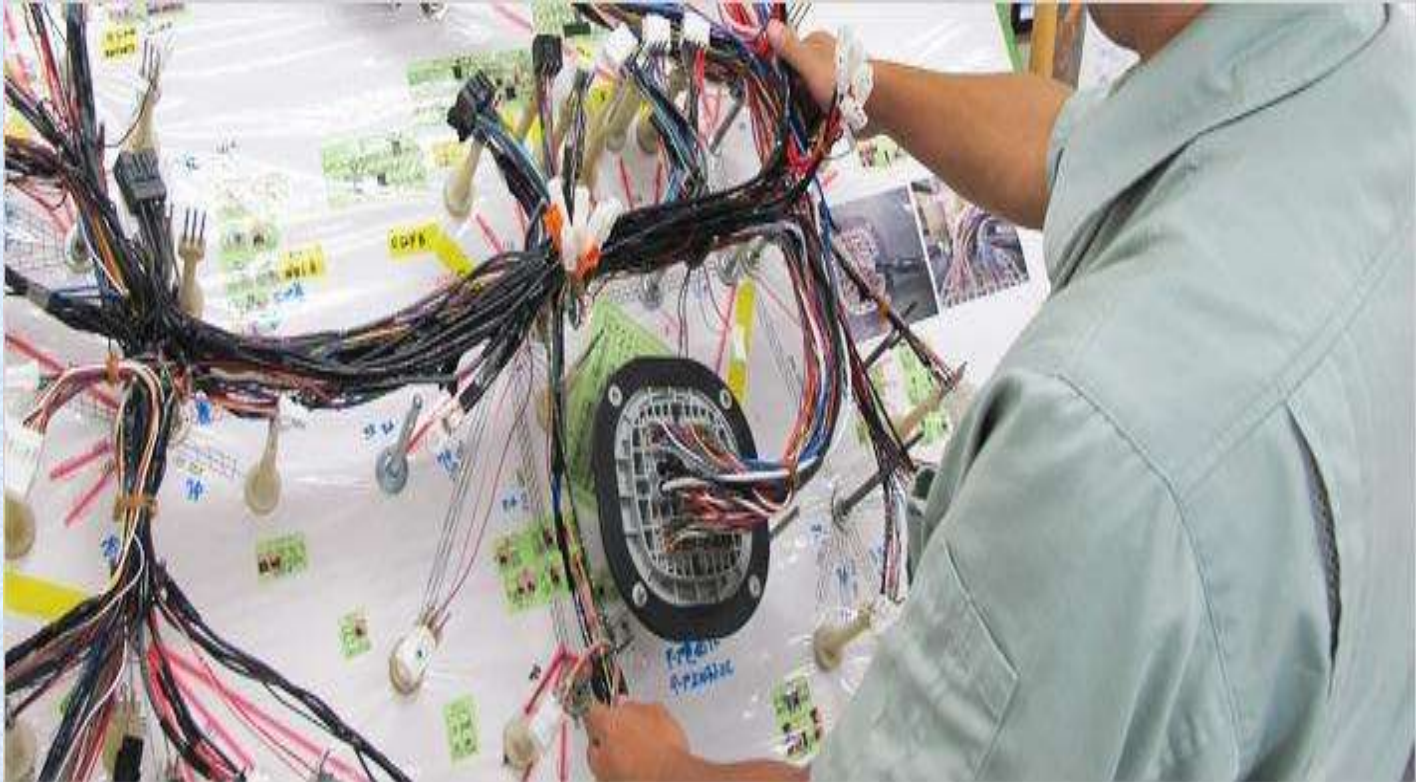
UPS Wiring Harness



Defence Wiring Harness



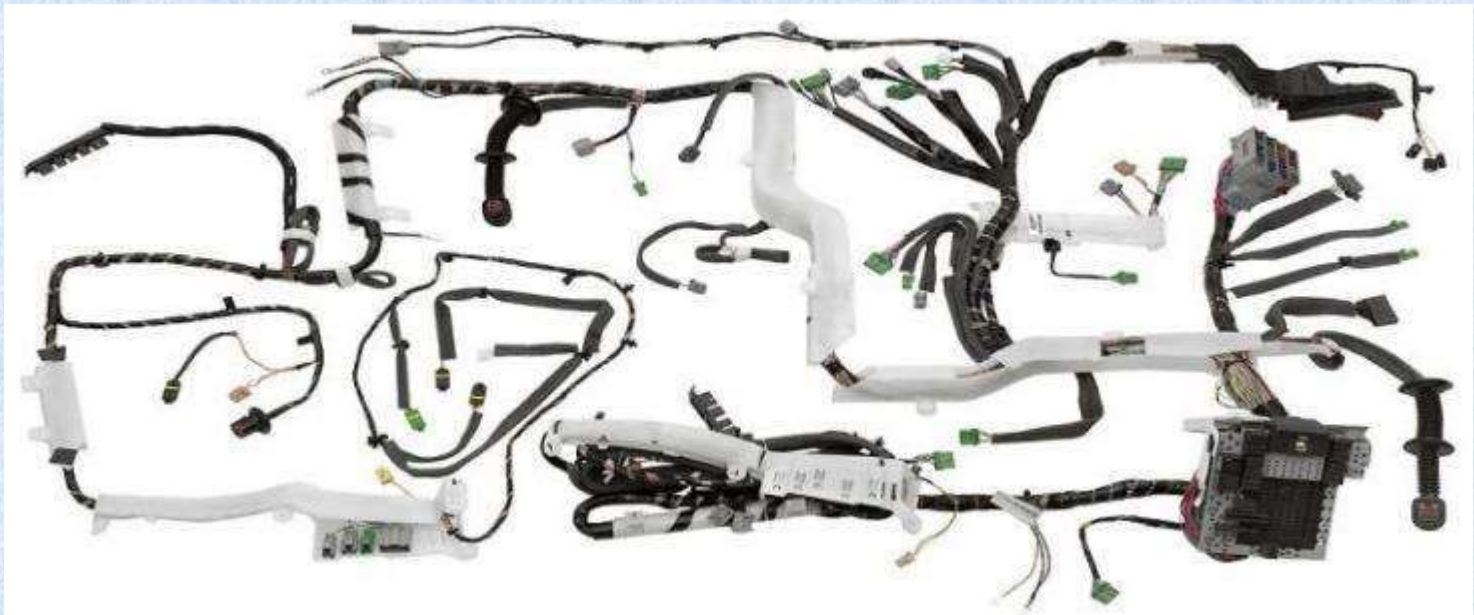
Defence - Truck Wiring Harness



Fuel Pump Wiring Harness



Construction Equipment Wiring Harness



II. JUNCTION BOXES



III. ELECTRICAL PANELS

Starter Panels for Submersible Pumps



Panels for Diesel Generators



Galvanized Panels for Power Sector



IV.WIRING ACCESSORIES

- Cable Ties
- Wiring Harness Clips
- Cable Glands
- Wire conduits
- Spiral conduits
- Heat shrink sleeves
- Expandable sleeves
- Cable markers
- Wiring Ducts



WIRING ACCESSORIES

Cable Ties & Mounts



Wiring Harness Clips



Cable Glands



Cable Conduits



Heat Shrink Sleeves



Expandable Sleeves



Cable Markers



Wiring Ducts



MACHINERY



Fully Automatic multi core cable cutting stripping machine



Core stripping machine



Fully Automatic single core cutting stripping machine



Fully Automatic cutting stripping & crimping machine



Semi automatic electrical crimping machine

MACHINERY



Fully Automatic sleeve cutting machine



Sleeve Heat Gun



Semi automatic lug crimping machine



Cable Tag / Ferrule printing machine



Dowel Crimping machine

Production Shop Floor



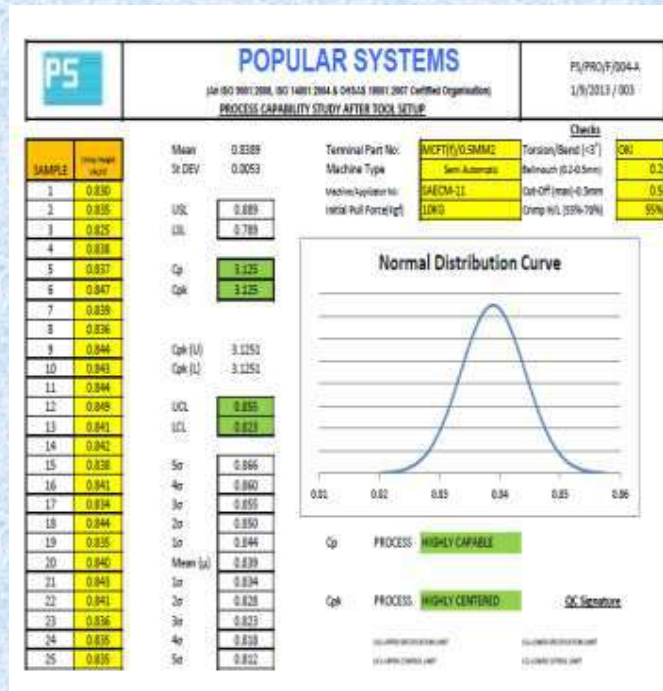
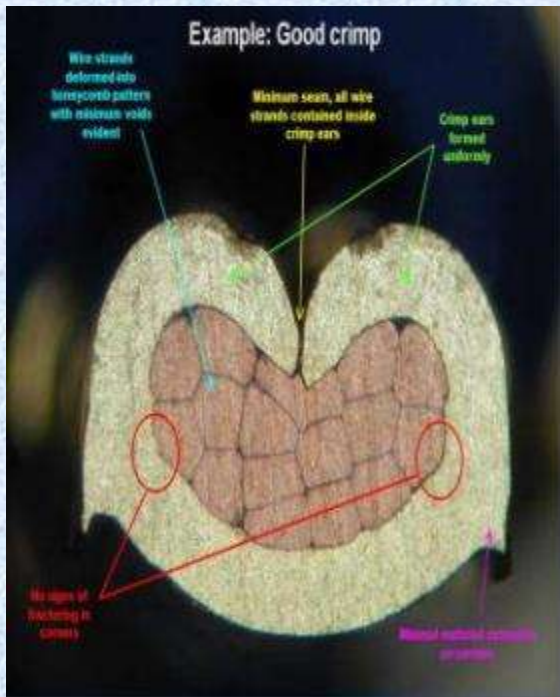
QUALITY

We are manufacturing superior quality products through our quality culture

Reliability of crimping is ensured with crimping cross section analyzer

We have implemented SPC at our process to streamline the quality

We are following IPC 620C standards for all soldering/crimping components



POPULAR SYSTEMS

CRIMPING - SETUP / PATROL INSPECTION REPORT

DATE/TIME: 1/9/13 10:00
OPERATOR: [Blank]
INSPECTOR: [Blank]

NO.	CRIMP HEIGHT (mm)	CRIMP WIDTH (mm)	CRIMP DEPTH (mm)
1			
2			
3			
4			
5			
6			
7			
8			
9			
10			
11			
12			
13			
14			
15			
16			
17			
18			
19			
20			
21			
22			
23			
24			
25			

QC Signature: [Blank]

TEST FACILITIES

We perform 100% electrical testing for all the harness by Microprocessor based Harness tester, which can able to test up to 1024 point harness



SYSTEMS IMPLEMENTED

4DX

5-S

Skill Matrix

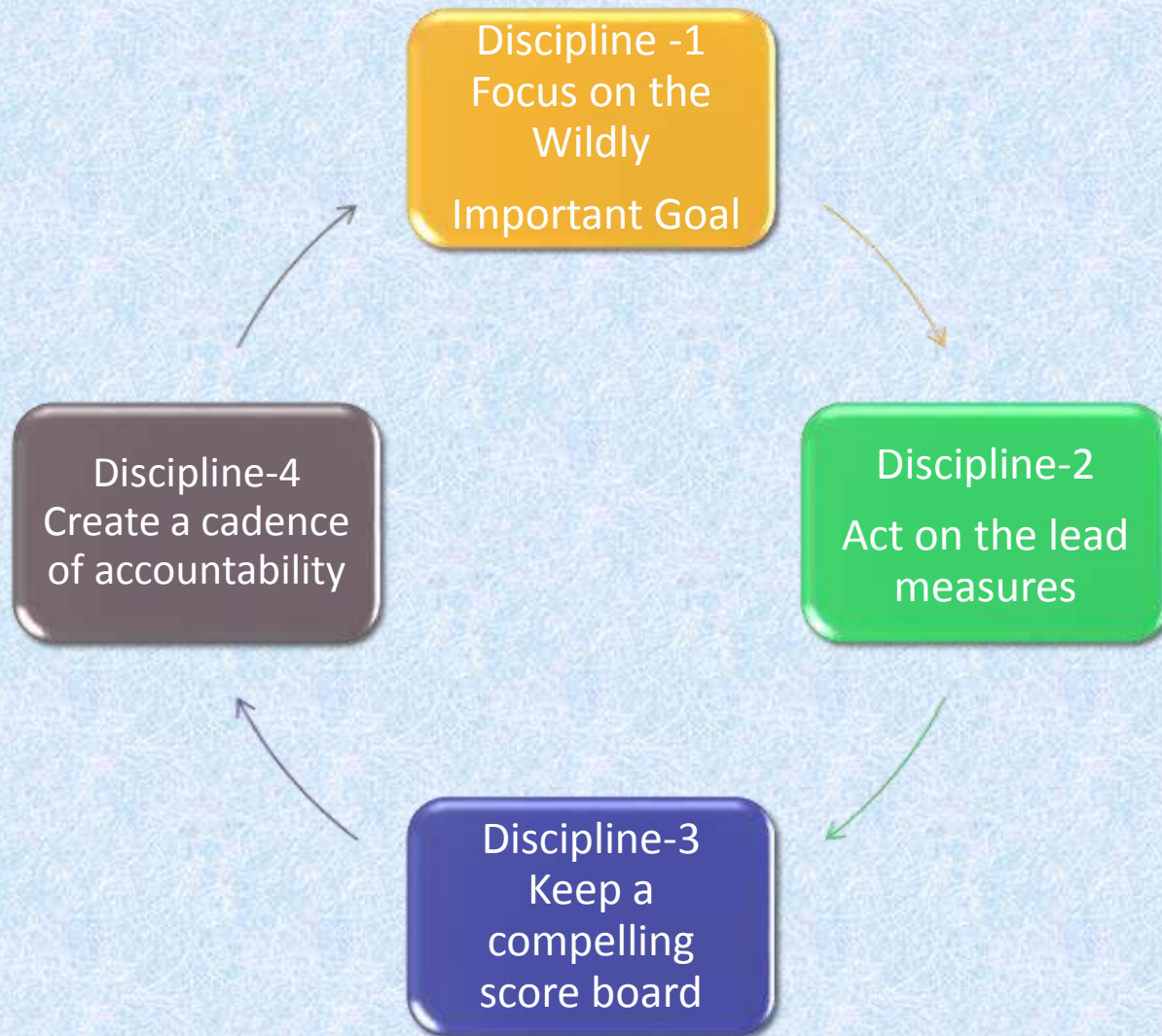
SQC

Work Instructions-SOP

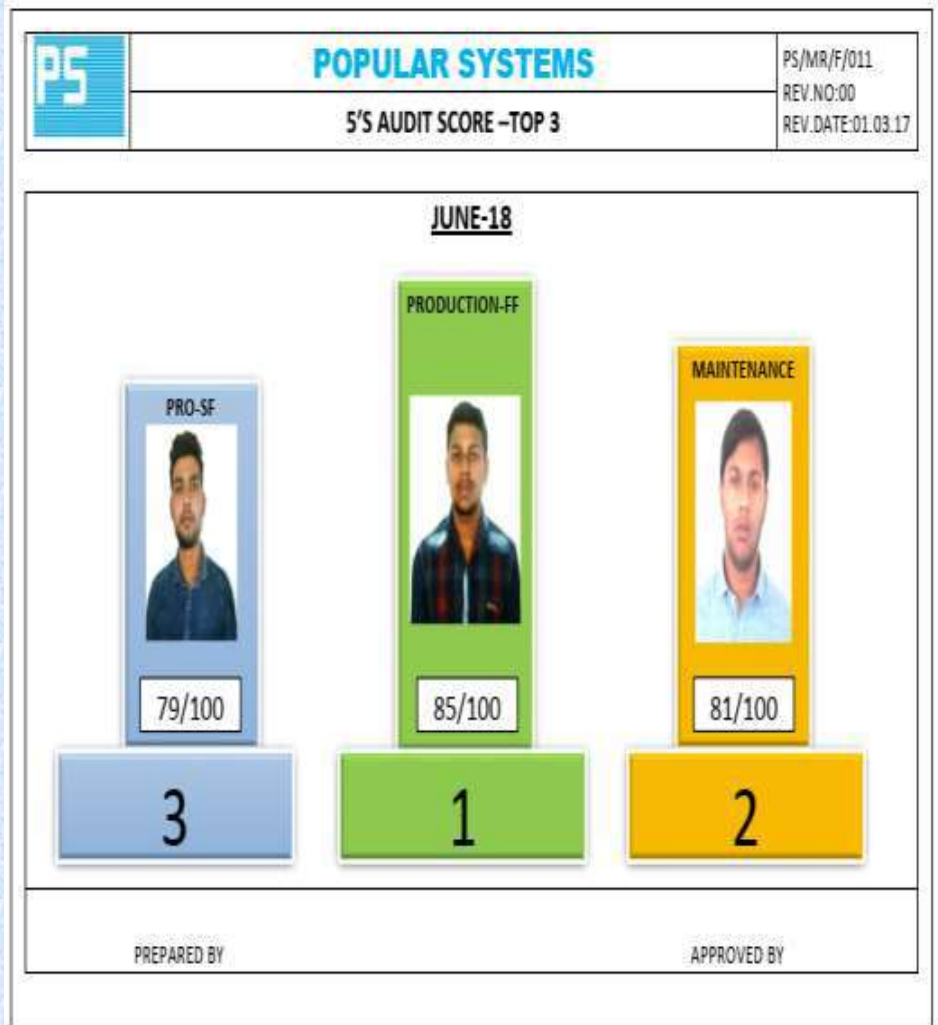
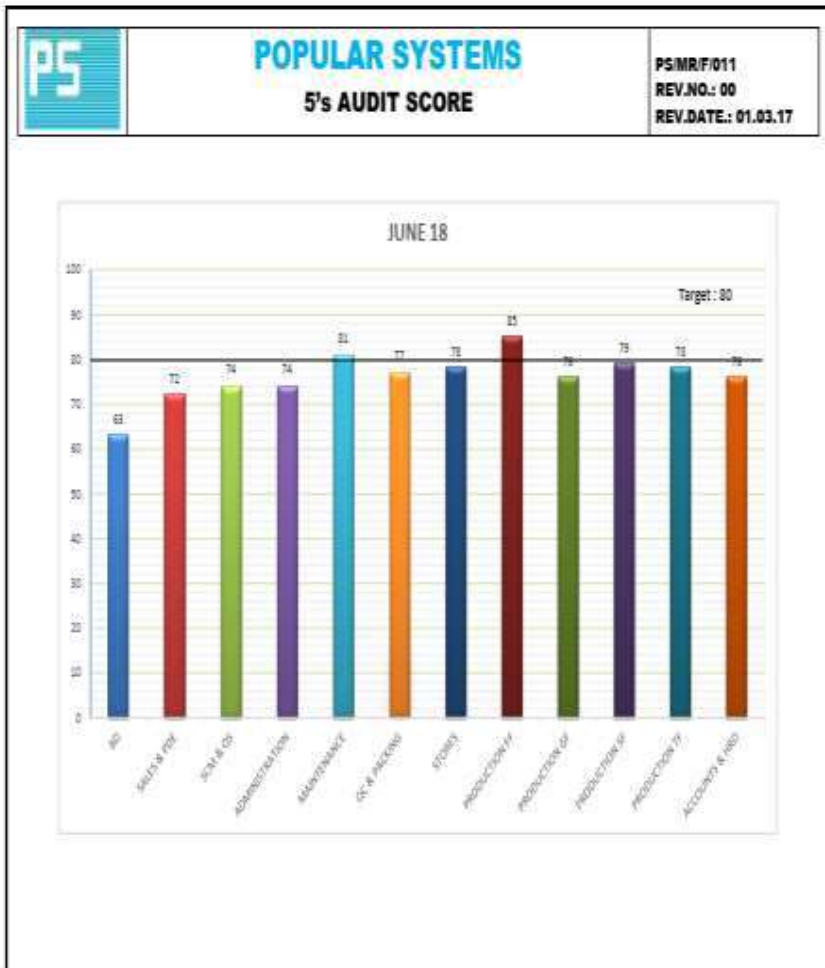
Kaizen

Kamishibai Audit

The Four Disciplines of Execution



5-S



SKILL MATRIX

S.NO	NAME	PROCESS				SKILL MATRIX				WIRE CUTTING AND BENDING FULL CRIMINAL				
		STRIPPING	CRIMPING	WELDING		STRIPPING	WELDING	WELDING		WIRE CUTTING AND BENDING	WIRE CUTTING AND BENDING	WIRE CUTTING AND BENDING		
1.	R. Sumathi	●	●	●	16.	Surya	●	●	●	1.	L. Ruban	●	●	●
2.	K.R. Remya	●	●	●	17.	Indhumathi	●	●	●	2.	Balaji	●	●	●
3.	M. Saraswathi	●	●	●	18.	Mary Jancy	●	●	●	3.	Pragadeeswaran	●	●	●
4.	P. Jenisha	●	●	●	19.	priya	●	●	●	4.	Santhosh	●	●	●
5.	K. Sowmiya	●	●	●	20.	M. Selvam	●	●	●	5.	Karthikeyan	●	●	●
6.	L. Nadhiya	●	●	●	21.	Lalitha	●	●	●	6.	Jawagan	●	●	●
7.	K. Divya	●	●	●	22.	Keerthana	●	●	●	7.	Vetrivel Pandiyan	●	●	●
8.	Kowsalya devi	●	●	●	23.	Vimalaravi	●	●	●	8.	Hari Krishnan	●	●	●
9.	Manjula	●	●	●	24.	Ruba	●	●	●	9.	Manigandan	●	●	●
10.	Subhashini	●	●	●	25.	Raichala	●	●	●	10.	Ramachandran	●	●	●
11.	Sindhu Bharathi	●	●	●	26.	Saranya	●	●	●	11.	Sreedharan	●	●	●
12.	Nivetha	●	●	●	27.	Sukirtha	●	●	●	12.	Nandha kumar	●	●	●
13.	C. Suguna	●	●	●	28.	Kanagarathinam	●	●	●	13.	Praveenkumar	●	●	●
14.	Ambika	●	●	●		In training	●							
15.	ISHwary	●	●	●		Can do the work with supervision	●							

● Can do the work without supervision
 ● can do the work & train others

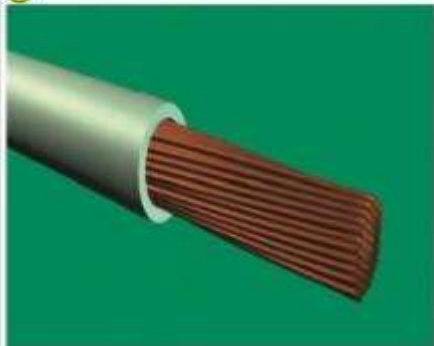
SQC

PS	POPULAR SYSTEMS <small>(AN ISO 9001:2008/ISO 14001:2004/OSHAS 18001:2007 CERTIFIED ORGANISATION)</small>																									REPORT No.	PS/PRO/004-B											
	CRIMPING - SETUP / PATROL INSPECTION REPORT																									DATE / REV No	1/9/2013 / 002											
MACHINE NO:						APPLICATOR No.						TOOL NUMBER						TERMINAL / WIRE																				
CRIMP HEIGHT						USL / LSL						UCL / LCL						INSTRUMENT																				
Dim./Char.	1	2	3	4	5	6	7	8	9	10	11	12	13	14	15	16	17	18	19	20	21	22	23	24	25	26	27	28	29	30	31	32	33	34	35			
USL																																						
UCL																																						
MEAN (\bar{x})																																						
LCL																																						
LSL																																						
Crimp Height																																						
Date																																						
Full Force(Kgf)																																						
Batch Qty																																						
Counter Reading																																						
Part No.																																						
S / P / L																																						
TTC																																						
TTM																																						
Operator Sign																																						
Inspector Sign																																						
LEGEND:	Pull force to be checked once in 2000 hrs (Approx)															REMARKS:																						
S - Setup Approval	Dim./Char. - Dimension Value / Character																																					
P - Patrol Inspection	TTC - Tool to be retained in Tool Crib																																					
L - Last Component Inspection	TTM - Tool to be sent for Maintenance																																					

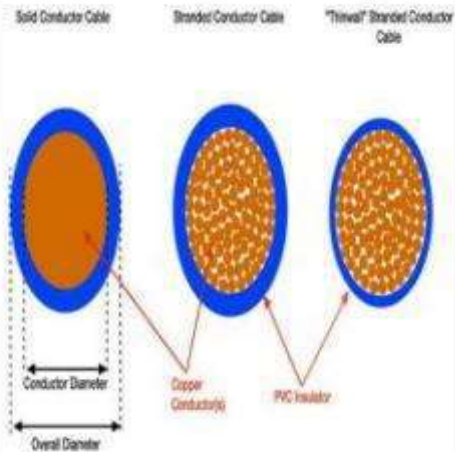
WORK INSTRUCTIONS

PS	POPULAR SYSTEMS	PS/PRO/D/WI-001
	WORK INSTRUCTIONS	REV.NO:00
	WIRE CUTTING-SINGLE / MULTICORE	REV.DATE:01.03.17

2



Cable cross section view



- Wire conductor ends are cut perpendicular to the wire longitudinal axis.
- All of the strands of the strand group are the same length.
- Wires are not scraped, nicked, cut, flattened, scored, or otherwise damaged.

Prepared by

Approved by

PS	POPULAR SYSTEMS	PS/PRO/D/WI-001
	WORK INSTRUCTIONS	REV.NO:00
	WIRE CUTTING-SINGLE / MULTICORE	REV.DATE:01.03.17

3

MULTISTRIP 9480 M

Follow the machine settings



- 1 → Pressure gauge
- 2 → Wire end monitoring
- 3 → Revolver guide
- 4 & 9 → Feeding unit
- 5 → Swivel Guide
- 6 → Cutting Blades
- 7 → Air Jet unit
- 8 → Linear guide
- 10 → Emergency Stop Button
- 11 → Display

1. Pressure Gauge



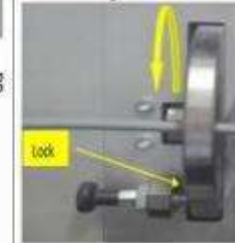
Maintain the machine air pressure level as below
Minimum : 5 bar
Maximum: 7 bar

2. Wire end monitoring



It Monitors the adequate supply of wire .
If the lever is down position -
Production stop.
If the lever is up position -
Production start.

3. Revolver guide



It feeds the raw material to feeding unit.
Select the hole dia appropriate to the wire by roll the revolver
Hole size : $\varnothing 2 - \varnothing 14$ mm

Prepared by

Approved by

KAIZEN

KAIZEN CORNER

Kaizen

Slow and steady wins the race

1 HARE
2 HARE
3 HARE
4 HARE
5 TURTLE

Kaizen means gradual, steady improvement. Doing "little things" better, working, and achieving even higher standards.

POPULAR SYSTEMS

KAIZEN

POPULAR SYSTEMS

KAIZEN

POPULAR SYSTEMS

KAIZEN

POPULAR SYSTEMS

KAIZEN

POPULAR SYSTEMS

KAIZEN

POPULAR SYSTEMS

KAIZEN

POPULAR SYSTEMS

KAIZEN

POPULAR SYSTEMS

KAIZEN

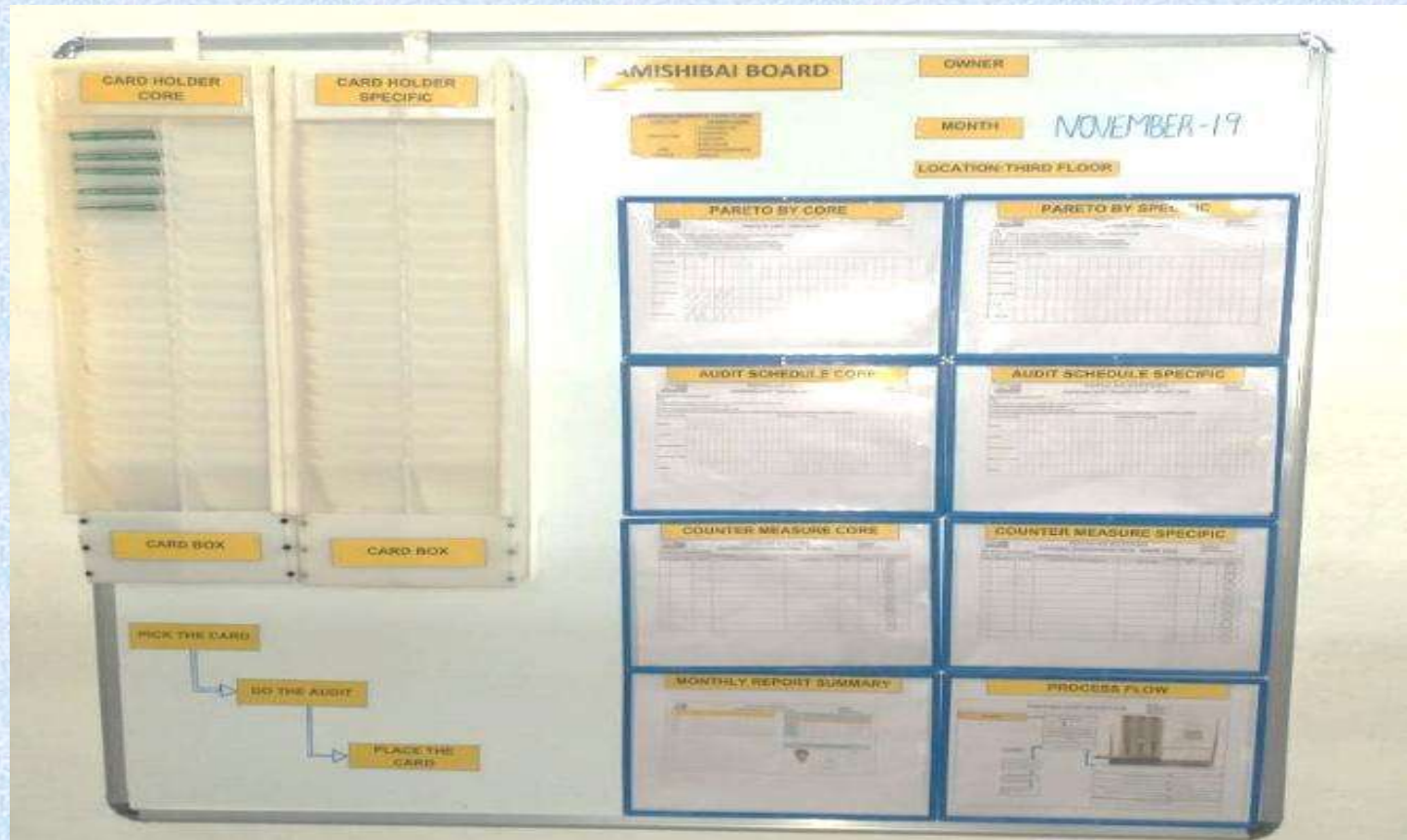
POPULAR SYSTEMS

KAIZEN

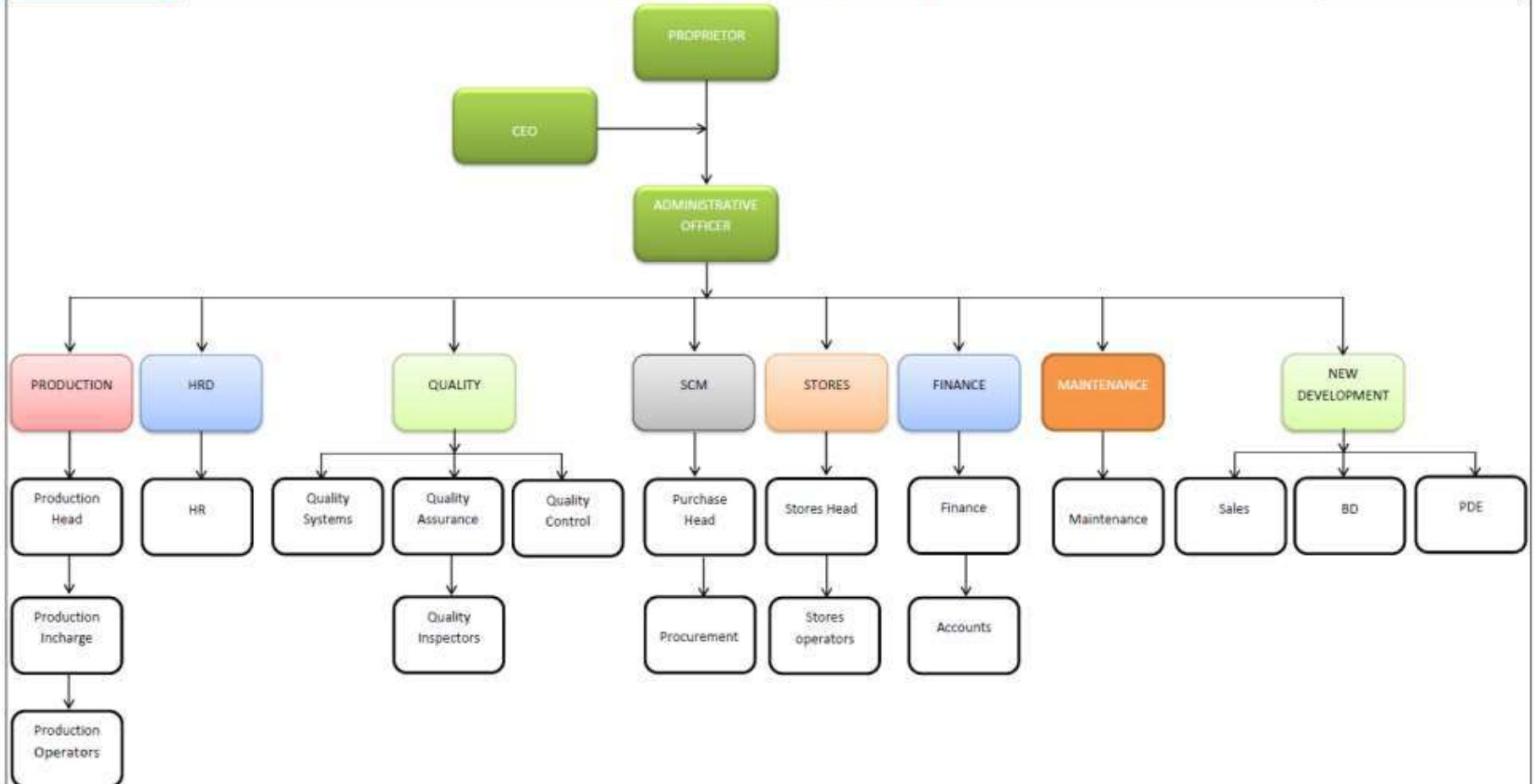
POPULAR SYSTEMS

KAIZEN

KAMISHIBAI AUDIT BOARD



ORGANISATION CHART



TRAINING FACILITIES

ON JOB TRAINING CENTER



CLASS ROOM TRAINING CENTER



STRENGTHS

- World class sophisticated infrastructure
- JIT Assembly Line
- Single Piece Flow Manufacturing System
- Employee Involvement at all levels
- Flexible Production Planning System
- Un-paralleled Customer Service
- Good Business Practices and Good Manufacturing Practices at all Levels
- Complete Transparency with our customers

COMPETITIVENESS

We maintain competitiveness by the following steps

- Procurement of Raw Materials from the most cost effective sources
- Keeping the Least Inventory
- Adoption of the best process to increase Productivity to the optimum level
- Adoption of the latest Techniques
- Value Engineering as a Continuous Process
- Keeping the Overheads to the Essentials with Minimum level
- Best utilization of Machinery, Man Power, Space, Power, etc., to gain the maximum efficiency
- Best Quality product with competitive price. 100% acceptance with customers (Zero defects)

AWARDS & ACCOLADES



**BEST SUPPLIER AWARD
M/S.GAMESA WIND
TURBINES PVT LTD**



**GOLD STAR MILLENNIUM
AWARD**



**GLOBAL ACHIEVER
AWARD-2013
BUSINESS LEADERSHIP
FORUM**

AWARDS & ACCOLADES



MOST VALUABLE RECRUITER



RISING STAR AWARD BNI

BUSINESS EVENTS



ELECTRONICA



ELECRAMA



ELECXPO

TESTIMONIALS

Green Channel Vendor to Roots Industries
,Wittur Elevator Components



Rank -1 Vendor To
M/s.Johnson Lifts Pvt.Ltd

TESTIMONIALS

ROOTS INDUSTRIES INDIA LTD

MAHLE LETRIKA ROOTS INDIA PVT LTD



ROOTS INDUSTRIES INDIA LIMITED
Horn Division - Coimbatore - 17

Supplier Performance Report Card

GREEN

Dec-18

Date : 13.01.2020

Supplier Name : M/s. Popular Systems, Coimbatore

Supplier Code : 151121

Scope of supplies : Wiring Harness

Kind Attn: Mr.K.VijayaPrabhu, Proprietor

Dear Sir,

Please find the below details of your performance report for the month of Dec'18.

1. Card Status:	Oct-18	Nov-18	Dec-18
	GREEN	GREEN	GREEN

2. Quality PPM:

Actual PPM - Year 2017 - 18	11
Actual PPM - Year 2018 - 19	22
Target PPM - Year 2019 - 20	50

Description	Oct-18	Nov-18	Dec-18	Remarks
Parts delivered	96817	140511	168321	
Parts found Not good during inward inspection. (Lot Size)	0	0	0	
Parts found Not good after Sorting inspection.	0	0	0	
Reworked Parts	0	0	0	
Rejection Parts	0	0	0	
Parts found Not good during production	0	0	0	
* 0 * Km failures	0	0	0	
Field Failures	0	0	0	
Total Rework / Rejection Quantity	0	0	0	
Rework / Rejection PPM. Monthly data	0	0	0	
Rejection PPM year to date	0	0	0	

Note:

If the supplier does not report for Sorting out Not good parts found after inward inspection as per stipulated time, then entire quantity will be accounted as Not good parts.

3. Delivery Performance:

Target Delivery rating	100%
No. of premium freight deliveries	0

Description	Oct-18	Nov-18	Dec-18	Remarks
Delivery Rating	100%	100%	100%	
No. of premium freight deliveries	0	0	0	

☆ -> No supplies

Type of card - Criteria

Green	Yellow	Orange	Red
Meeting the target (For this month) in all of the following: 1. Quality - PPM 2. Delivery	Not meeting the target (For this month) in any one of the following: 1. Quality - PPM 2. Delivery	Not meeting the target for last 3 months (including this month) in any one of the following: 1. Quality - PPM 2. Delivery	Not meeting the target for last 6 months (including this month) in any one of the following: 1. Quality - PPM 2. Delivery - Or - Line stop due to poor performance.



Supplier Performance Report Card

From: MAHLE LETRIKA ROOTS INDIA PVT LTD, COIMBATORE - 17

Date: 25.04.2018

To:

Supplier Name: M/s. Popular Systems

Supplier Code: 02001037

Scope of supplies: Electrical Components

GREEN

Card Status -

Kind Attn:

Dear Sir,

Please find the below details of your performance report.

1. Card Status:	Jan-18	Feb-18	Mar-18
	GREEN	GREEN	GREEN

2. Quality PPM:

Actual PPM - Year 2018 - 17	0		
Target PPM - Year 2017 - 18	0		
Description	Jan-18	Feb-18	Mar-18
Parts delivered	1997	0	0
Parts found bad during inward inspection.	0	0	0
Parts found bad during sorting inspection.	0	0	0
Reworked Parts	0	0	0
Rejection Parts	0	0	0
Parts found bad during production	0	0	0
* 0 * Km failures	0	0	0
Field Failures	0	0	0
Total Rework / Rejection Quantity	0	0	0
Rework / Rejection PPM. Monthly data	0	0	0
Rejection PPM year to date	0	0	0

Note:

If the supplier does not report bad parts found during sorting out activities and reworked parts, then the entire quantity is counted as bad parts. Logistics failures are not used for calculation of 'PPM rating'.

3. Delivery Performance:

Target Delivery rating	100%
No. of premium freight deliveries	0

Description	Jan-18	Feb-18	Mar-18
Delivery Rating	100%	100%	100%
No. of premium freight deliveries	0	0	0

☆ -> No supplies

Type of card - Criteria

Green	Yellow	Orange	Red
Meeting the target (For this month) in all of the following: 1. Quality PPM 2. Delivery	Not meeting the target (For this month) in all of the following: 1. Quality PPM 2. Delivery	Not meeting the target for last 3 months (including this month) in all of the following: 1. Quality PPM 2. Delivery	Not meeting the target for last 6 months (including this month) in all of the following: 1. Quality PPM 2. Delivery - Or - Line Stop due to poor Performance.

TESTIMONIALS

WITTUR ELEVATOR COMPONENTS INDIA PVT LTD

JOHNSON LIFTS PVT LTD



PERFORMANCE REPORT CARD

GOOD (Score= 90% to 100%)	SATISFACTORY (Score =75% to 89%)	UNSATISFACTORY (Score = 60% to 74%)	BAD (Scores < 60%)
------------------------------	-------------------------------------	--	-----------------------

Supplier	POPULAR SYSTEMS	% Score	
	No.6, Narayanawamy Layout, Narasimhanaickenpalayam, Coimbatore - 641 051, Tamil Nadu,India.	100%	GOOD

Kind Attn: Mr. Vijaya prabhu

Proprietor

Pl find the below details of your performance for the month of May '19

Card Status	MAY '19 Performance	Achieved Score	Max. Score
Quality	Monthly PPM	0	30
Delivery	OTD in %	100.0	30
Competiveness	Monthly in %	17%	20
Response Time	Complaint closing time in %	100	20
Total Percentage Score			100%

Congratulations! Your performance is GOOD , Keep it up

Regards,
Wittur Elevator Components India

Remarks: Please send the acknowledgement mail to the undersigned with in 24 hours from the receipt of this letter

Johnson LIFTS & ELEVATORS		SUPPLIER QUALITY ASSURANCE PERFORMANCE REPORT CARD			
TO: POPULAR SYSTEMS 77A MARIAMMAN KOIL STREET NARASIMHANAICKENPALAYAM COIMBATORE					
MONTH	APR - JUN'19				
SUPPLIER NAME	POPULAR SYSTEMS				
KIND ATTENTION	Mr. VIJAYA PRABHU K				
Please find below the details of your Quality performance for the month					
Supplier Rank	1	(Out of 50 suppliers /7=Best, 50=worst)			
Target - 2019	90	Actual score for the month	100.00		
INCOMING REJ PPM SCORE	REJECTION PPM AT INCOMING STAGE	50	REJECTION PPM AT INCOMING STAGE	50.00	50.00
CUSTOMER COMPLAINTS SCORE	SITE COMPLAINTS DUE TO SUPPLIER PARTS	30	SITE COMPLAINTS DUE TO SUPPLIER PARTS	30	30.00
RESPONSE FACTORS SCORE	CAR CLOSURE (H)	20	CAR CLOSURE	5	20.00
	IMMEDIATE ACTION TO LINE COMPLAINTS (H)		IMMEDIATE ACTION TO LINE COMPLAINTS	5	
	CAPA AS PER TARGETS (H)		CAPA AS PER TARGET	5	
	PACKING AND TC SUBMISSION (H)		PACKING AND TC SUBMISSION	5	
OVERALL SCORE TOTAL	100	OVERALL SCORE ACHIEVED	100.00		
Rating criteria : > 90 = Good (Sustain the status), 70 ~ 89 = Satisfactory (Focus on continual improvements), <70 = Not satisfactory (Drastic improvement required)					
Note : J.L.P.L will send this Performance report card on 10th of every month. The worst 5 rank suppliers (Bottom level suppliers) must come to J.L.P.L and submit the improvement actions within 15 days from the date of this report.					
Thank you very much for your continuous support					
Best Regards, V Dinesh Kumar Head - Quality Assurance			V.S Gokulnathan Head - Purchase		

TESTIMONIALS

ZF WIND POWER COIMBATORE LTD

Email

Popular Systems
Marianman Koil Street,
641031 Coimbatore
India

Delivery Performance Evaluation

Plant:	Production Coimbatore
Location:	Coimbatore
Planner:	Perinbarvasan Thang
Phone:	6250
Supplier:	3000000545
Page:	1 / 2

Period: 01.11.2019 - 30.11.2019
Delivery performance total: 100,0 %

Delivery performance schedule-oriented: 100,0 %

Number of shipments: 4

Evaluated schedules:

on time deliveries:	2
late deliveries:	1
average late deliveries:	2,0
early deliveries:	1
average early deliveries:	2,0

Location: Coimbatore

Page: 2 / 2

Details of delivery performance schedule-oriented:
- Popular Systems - 641031 Coimbatore

Material		Number of Goods receipts	Delivery compliance %
GP472469	WIRING HARNESS	4	100,0

MEMBERSHIPS



Automotive Industry Action Group The Coimbatore productivity Council Institute of Printed circuit

CERTIFICATIONS

We are an IATF 16949: 2016,ISO 9001:2015,ISO 14001:2015 & ISO 45001:2018 Certified organisation



THANK YOU