

Besone skin time and time saving line

## Skin & Time saving first essence.

The first step for dull and dry skin  
First Essence, the basis of moist and resilient skin

### [FEATURES]



Whitening, wrinkle improvement double cosmetics

### [How to Use]

After cleansing, get an appropriate amount onto cotton pad and gently wipe off following skin texture, lightly tap for absorption



#### First essence to shorten skincare step.

Nutrition and water supply in the first step.  
Starter with toner & essence function.  
A booster to help absorb next skin care products.



#### 2-layer fermented ingredients contain 77.4%.

Helps with antioxidant, anti-wrinkle and moisturizing effects.  
2 ~ 3 times better function than general fermented ingredients.



#### Contains 4 nutritional moisturizing & 8 herbal ingredients.

Nourishing moisturizing and nutrition from the inside.  
Skin soothing+Skin  
Protection+Conditioning+Vitality+Energy Up!

### [Main Ingredients]



#### 2-layer fermented ingredients contain 77.4%.

Helps with antioxidant, anti-wrinkle and moisturizing effects.  
2 ~ 3 times better function than general fermented ingredients.



#### Contains 4 moisturizing ingredients.

Moisture formation on dry skin.



#### Contains 8 herbal ingredients.

Helps transparent & gorgeous skin care.

## Skin & Time saving moisture cream

'Skin saver' that saves skin as if it was a born beauty. (9 in 1 cream)

### [FEATURES]



#### Full of nine functions.

All-in-one moisture cream with all the essentials for skincare including moisturizing, elasticity and nutrition.



#### Beauty diet solution.

4 steps of serum + essence + lotion + cream shortened to one '9 in 1' cream



#### Light texture and feeling.

Light cream formulations such as spring breeze gently adhere and remain moist without oily.



#### Contains 4 nutritional moisturizing & 8 herbal ingredients.

Nourishing moisturizing and nutrition from the inside.  
Skin soothing+Skin Protection+Conditioning+Vitality+Energy Up!

### [Main Ingredients]



4 nutritional moisturizing ingredients.  
Nourishing moisturizing and nutrition from the skin.



Contains natural moisturizing ingredients  
Smooth and moisturizes skin and strengthens moisture barrier.



Contains 8 herbal ingredients.  
Helps transparent & gorgeous skin care.



Whitening, wrinkle improvement double cosmetics

### [How to Use]

After use skin & time saving first essence, get appropriate amount and apply onto face, gently tap for absorption.

## Skin & Time saving sleeping pack

born beauty created in the night.

miraculous change of skin overnight.



### [FEATURES]



**Sleeping pack is convenient without having to washing.**

It's not a peel-off or wash-off pack, Apply to skin and absorb.  
Easy and convenient smart care.



**Sleeping pack keeps skin care while sleeping.**

Moisture, wrinkles, nourishment, pores, whitening, elasticity and skin care effect lasts for the night. The next day the skin seem to have a good night's sleep!



**No artificial flavor added, pleasant deep sleep therapy.**

Added 10 floral and 8 herbal ingredients that your skin likes, makes you feel refreshed.

### [Main Ingredients]



4 nutritional moisturizing ingredients.  
Forms a moisture layer on dry skin.



Contains 10 floral ingredient.  
Pure and transparent skin care.  
Moisturizing+Vitality+Energy+Antioxidant Up!



Contains 8 herbal ingredients.  
Helps transparent & gorgeous skin care.

### [How to Use]

Use at the last step of skin care, apply an appropriate amount over the face avoiding eye and lip area and get sleep. Wash off the face with lukewarm water the next morning.

Besone pore and tightening line

## Pore & Tightening first essence

The power of 2-layer fermentation to tighten enlarged pores.



### [FEATURES]



#### First essence to shorten skincare step.

Nutrition and water supply in the first step.  
Starter with toner & essence function.  
A booster to help absorb next skin care products.



#### 2-layer fermented extract containing 85.8%

Two special fermentation processes twice as abundant.  
2-layer fermentation base for moisture and moisturizing charging.



#### Because it is porous powder, does not be shiny.

Porous powder grains that absorb oil keep skin smooth, Complete skin base that does not damage.

### [Main Ingredients]



2-layer fermented ingredients contain 85.8%.  
Helps with antioxidant, anti-wrinkle and moisturizing effects.  
2 ~ 3 times better function than general fermented ingredients.



Contains tannin and pore care ingredients.  
Helps smooth and soft skin care by the effect of converging skin and pores.



Contains 8 herbal ingredients.  
Helps transparent & gorgeous skin care.

### [How to Use]

After cleansing, get an appropriate amount onto cotton pad and gently wipe off following skin texture, lightly tap for absorption.

## Pore & Tightening fresh cream

Tightening enlarged pores pore diet cream to get rid of oil.

Whitening, wrinkle improvement double cosmetics



### [FEATURES]



**Wide pores and shine can be solved at once.**

4 pore care ingredients and 8 herbal ingredients control wide pores and sebum, complete a smooth skin base.



**Contains patented ingredients to relieve sebum secretion.**

The polyphenol extracted from the apple improves the condition of sensitive skin and oily skin!

Keeps skin fresh and moist without oily.



**Contains 17 plant derived ingredients without skin irritation.**

Collect natural derived ingredients that are mild to the skin, you can safely use to sensitive skin.

### [Main Ingredients]



**Contains 4 tannin ingredients.**

Effect of converging loose pores and excessive sebum control.

Helps elastic & smooth skin care.



**Contains 8 herbal ingredients.**

Helps transparent & gorgeous skin care.

### [How to Use]

After use Pore & Tightening First Essence, get appropriate amount and apply onto face, gently tap for absorption.

## Pore & Tightening sleeping pack

Overnight skin care while sleeping! Tightening up pores! Snowflake sherbet sleeping pack



### [How to Use]

Use at the very last step of skin care, apply an appropriate amount over the face avoiding eye and lip area and get sleep. Wash off the face with lukewarm water the next morning.

### [FEATURES]



#### Cream formulation of snowflake sherbet.

The snowflake formulation has unique cooling sensation, and it provides continuous moisture and nutrition without sticky.



#### Tightly managed until sleeping time.

Moisture, wrinkles, nourishment, pores, whitening, elasticity and skin care effect lasts for the night.



#### Contains 4 tannin ingredients and 8 herbal ingredients.

It gives a refreshing feeling to the skin, keeps it moisturized in the tired skin, helps the tight-fisted pores and bright skin.

### [Main Ingredients]



#### Specialized recipe for oily skin.

Contains glacier water, xylitol, etc, and helps control excess sebum and oil.



#### Contains 4 tannin ingredients.

Effect of converging loose pores and excessive sebum control.  
Helps elastic & smooth skin care.



#### Contains 8 herbal ingredients.

Helps transparent & gorgeous skin care.

Besone premium care

## Besone Golden Luminous premium cream

Golden Luminous cream that sparkles your skin with dazzling brilliance.

### [FEATURES]



#### >Self-luminous with a delicate gold light

Golden Pearl helps to refract, expressing three-dimensional skin  
Natural glossy makes a natural and elegant skin tone



#### >Healthy and lively, real brilliance.

When the golden capsule in the white cream bursts, it changes from a pale skin tone to a healthy skin tone.

### [Main Ingredients]



#### **Contains Luminous brilliance ingredients.**

Contains gold, milk protein extract, rice extract.  
Helps smooth and vitality skin care.



#### **Contains moisturizing and softening ingredients.**

Contains Aloe vera leaf extract, Betaine, Beeswax.  
Maintain skin moisturizing ability and calming effect of the sensitive skin.

### [How to use]

Apply moderate amount onto face, evenly spread over your skin and gently tap for absorption.

## Antioxidant capsule cream

Antioxidant cream enriched with Acai berry energy making your skin shine.

### [FEATURES]



**Purple Light Energy Containing Asai Berry**  
Contains anthocyanin-rich ingredients to make your skin vibrant and vibrant



**Gel formulation with moisture**  
The oil capsules burst into a gel-type base that is full of moisture, giving the skin sufficient moisture and nutrition.



**Mongle Mongle Vitamin Oil Capsule**  
Rich, vitamin-rich Cough Buckton oil bursts into moist, clean skin!



**Contains antioxidant patented ingredients**  
Contains patented antioxidant ingredients to help maintain a radiant, firm skin  
\* Petroleum extract, fig extract, Oda extract, bank extract, etc.

### [Main Ingredients]



**Antioxidant Cream Base**  
Soothing & Revitalizing

Euterpe Oleracea Fruit Extract ,Citrus Junos Fruit Extract, Honey Extract etc.



**Antioxidant Capsule Base**

Contains cod liver oil called Cubuckton to help manage pigmentation and help with healthy, clean skin

### [How to use]

At the last step in daily skincare, apply evenly to face and pat gently for absorption.

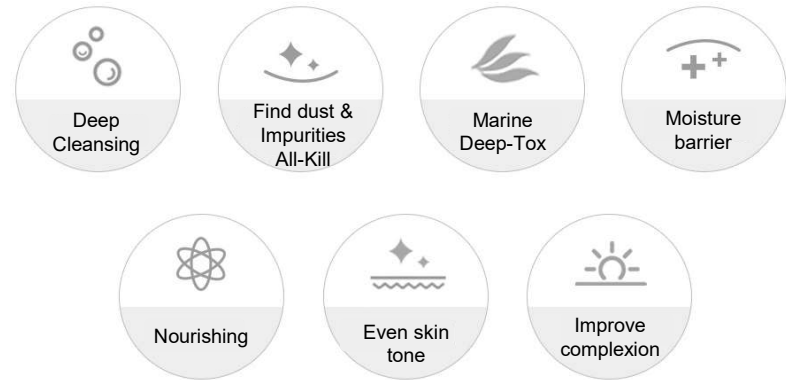
# besone INNOCENCE DEEP CLEAN MASK

#Goodbye fine dust, dead skin cells Deep-Tox Massage Cream



## [FEATURES]

3 steps Deep clean detox mask (Cream → Oil → Moisturizing)



## [★MD's Tip★]



## [Main Ingredients]



## [How to use]

After cleansing, apply a proper amount onto face and rolling out enough until the cream turns to oil, then gently tissue-off

\* \*Available for body troubled by sebum, impurities, dead skin cells.



Cloud O2 cream

Pop! Pop! O2 cream that awakens your sleeping skin with oxygen bubbles.



## [FEATURES]



10 seconds of oxygen massages make up your make-up!

If you make base makeup to the skin texture that has become firm with oxygen bubble massage, It has an effect of being adhered like a magnet without lifting or peeling off.



Transform Texture in which the soft cream turns into a cloud form.

The more exposure to air, the more oxygen bubbles form!  
Soft bubbles formulations make the skin more softer and more supple.



Oxygen bubbles penetrate and make it tight inside your skin!

As the oxygen bubble bursts in 'Cloud Texture', moisture and a protective film are formed between the skin texture to complete tight-fisted skin.

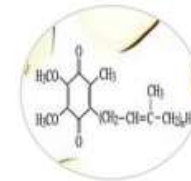
### [Main Ingredients]



The setting of the skin environment.  
Oxygen



Improve moisture holding power and moisturizing ability power.  
Water soluble collagen and lecithin.



Effect of pores  
converging and skin  
elasticity.  
Thorn bamboo extract,  
birch sap, cypress  
extract, green tea  
extract, Etc.



Skin protection and elasticity.  
Squalane,  
Ubiquinone.

## [How to Use]

Apply moderate amount and thoroughly spread over the face. When oxygen bubbles are generated, lightly tap for absorption.