



ACCESS CONTROL SOLUTIONS
TURNSTILES ■ BARRIERS ■ ID SYSTEMS

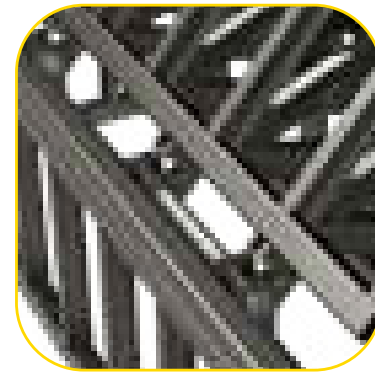
Company Presentation, Videos & Product Datasheets



Click on any Part to Navigate Directly



Company
Profile



Strategic
Focus



Mission &
Vision



Quality
Policy



Environmental
Responsibility



Partners &
Distribution



A Selection of
Partners & Clients



Product
Range

QUICK NAVIGATION CONTENTS
GATESET SECURITY SYSTEMS

GateSet Security Systems

GateSet Security Systems is a born-global Turkish manufacturer established in Istanbul, the ultimate meeting point of Europe and Asia's major business actors. Since 2013, GateSet provides access control and security solutions such as turnstiles, barriers and ID systems to a world-wide roster of clients while continuously widening its product range to accommodate the ever-evolving security requirements of both corporate and industrial realm.



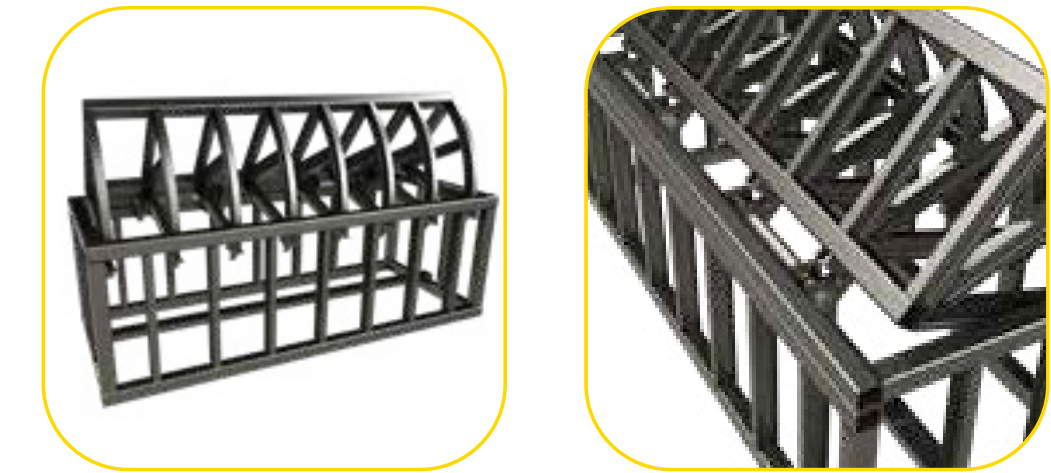
ACCESS CONTROL SOLUTIONS
TURNSTILES ■ BARRIERS ■ ID SYSTEMS

Thanks to a profound knowledge in security field that stems from experience of many years and a flexible production line, GateSet is able to provide customized solutions with tailor produced physical security products and software to clients all around the world; including world's leading banking networks, international integrators, ministries of numerous countries, subway and airport centers of largest cities, various military compounds and more.

With a service-oriented approach, GateSet offers much more than only products, through international partners who are committed for further development of its range of services.

Customized Production

Thanks to flexible production line and in-house design engineers, GateSet is capable of manufacturing customized systems, which are tailor produced depending on exact specific requirements for specialized projects.



Service Oriented Structure

With its service oriented structure, GateSet offers more than only products. Ultimate aim is to provide maximum support at all levels including:

- Detailed Site Survey*
- Project Design depending on Security Risk Analysis*
- Installation and Commissioning*
- Providing Security for people, buildings and property*
- Maintenance and After Sales Support Services*

which are available in all major countries in EMEA Region thanks to Professional World-Wide Network of Partners, that are established by long-term business relationships depending on trust, commitment and mutual benefits.



Our Mission

Is to keep the customer satisfaction at the highest level by providing user oriented Security and Access Control Solutions while continuously increasing our product and service quality in order to achieve best quality of support at every level starting from project design to after sales support.

Our Vision

Is to expand our worldwide distribution and partnership channel and become one of the flagship global brands serving at Access Control Solutions industry.





Quality is the key to GateSet's overall success in meeting customer expectations at the highest level and providing error-free service and products to all partners and customers. As being an ISO 9001:2015 accredited company, the Quality policy implemented on customer-oriented behavior, leadership, full involvement of management and personnel, a systematic and process-directed approach towards all business activities, constant improvement of processes and unity of goals. All GateSet employees and corporate partners are committed to maintain GateSet's policy in order to provide standard product and service to the end users at every stage of business.

For full text of Quality Policy, please contact customer-service@gateset.com.tr

QUALITY POLICY GATESET SECURITY SYSTEMS

ZERTIFIKAT • CERTIFICATE • CERTIFICADO • CERTIFICAT



QUALITY MANAGEMENT SYSTEM CERTIFICATE

Universal GmbH

This certificate is granted to the organization,

GATESET GUVENLIK SISTEMLERI SAN. VE TIC. LTD. STI.

Kozyatagi Mah. Bayar Cad. No:72/7 Kadikoy/ISTANBUL/TURKEY

by review of IA2-5174 numbered report for the scope

**MANUFACTURING, MARKETING, SALES, INSTALLATION AND
COMMISSIONING SERVICES OF VEHICLE AND PEDESTRIAN
ACCESS CONTROL AND BARRIER SYSTEMS**

to certify that a management system in accordance with
standard's clauses is established and being implemented

DIN EN ISO 9001:2015

Certificate No : QMS 0720 007005

Original Certification Date : 22.07.2020

Issue / Revised Date : 22.07.2020

Expiry Date : 21.07.2021

Certification Period : 3 years (1st year)








The authenticity of this certificate can be confirmed online or by e-mail to the Head Office via:
UNIVERSAL GmbH • Wilfried Diekmann Str., 20b, 44536 Lünen Germany • T : +49 (0) 231 9931 9960 • info@uni-cert.de • www.uni-cert.de

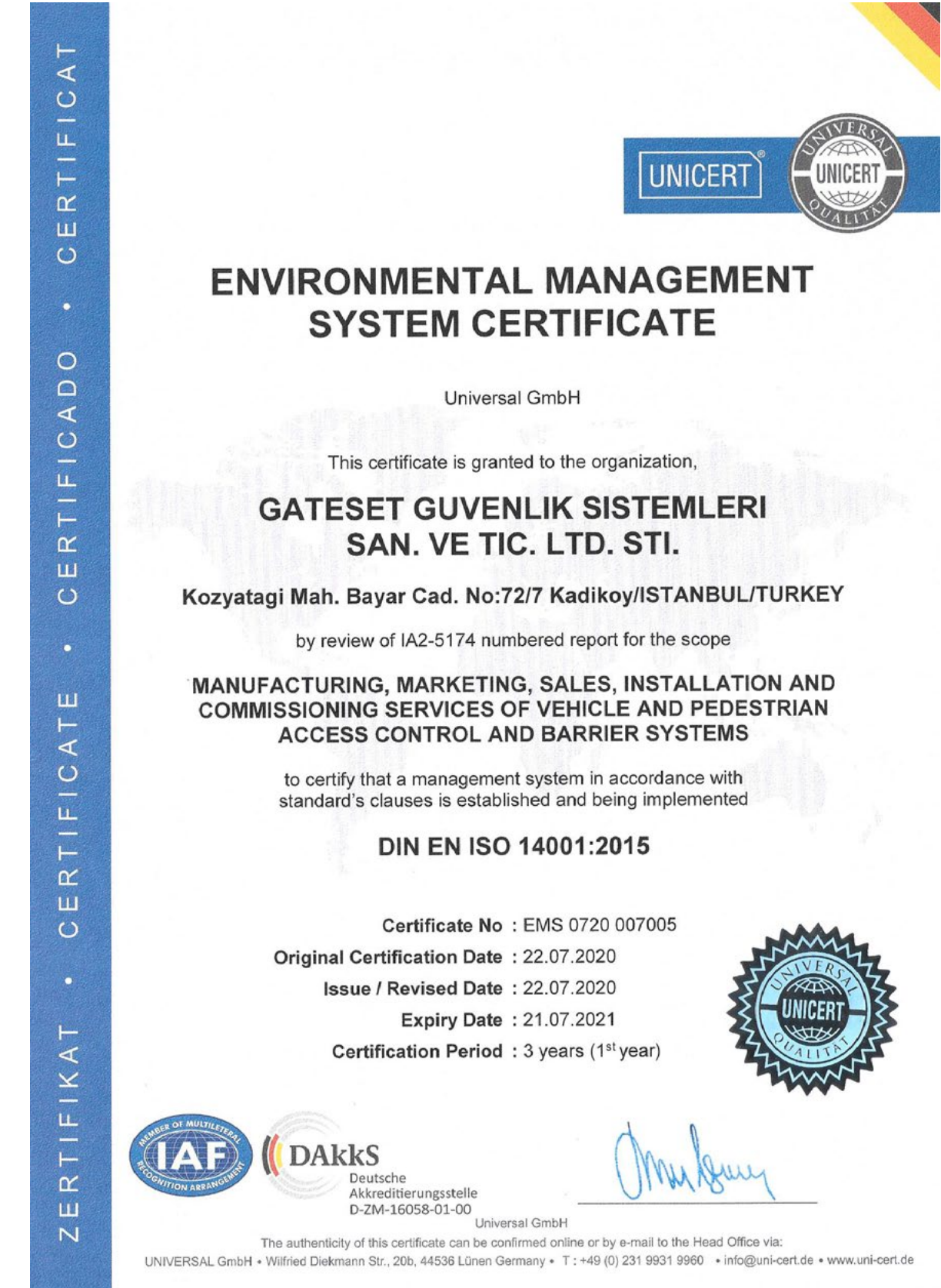
We Care

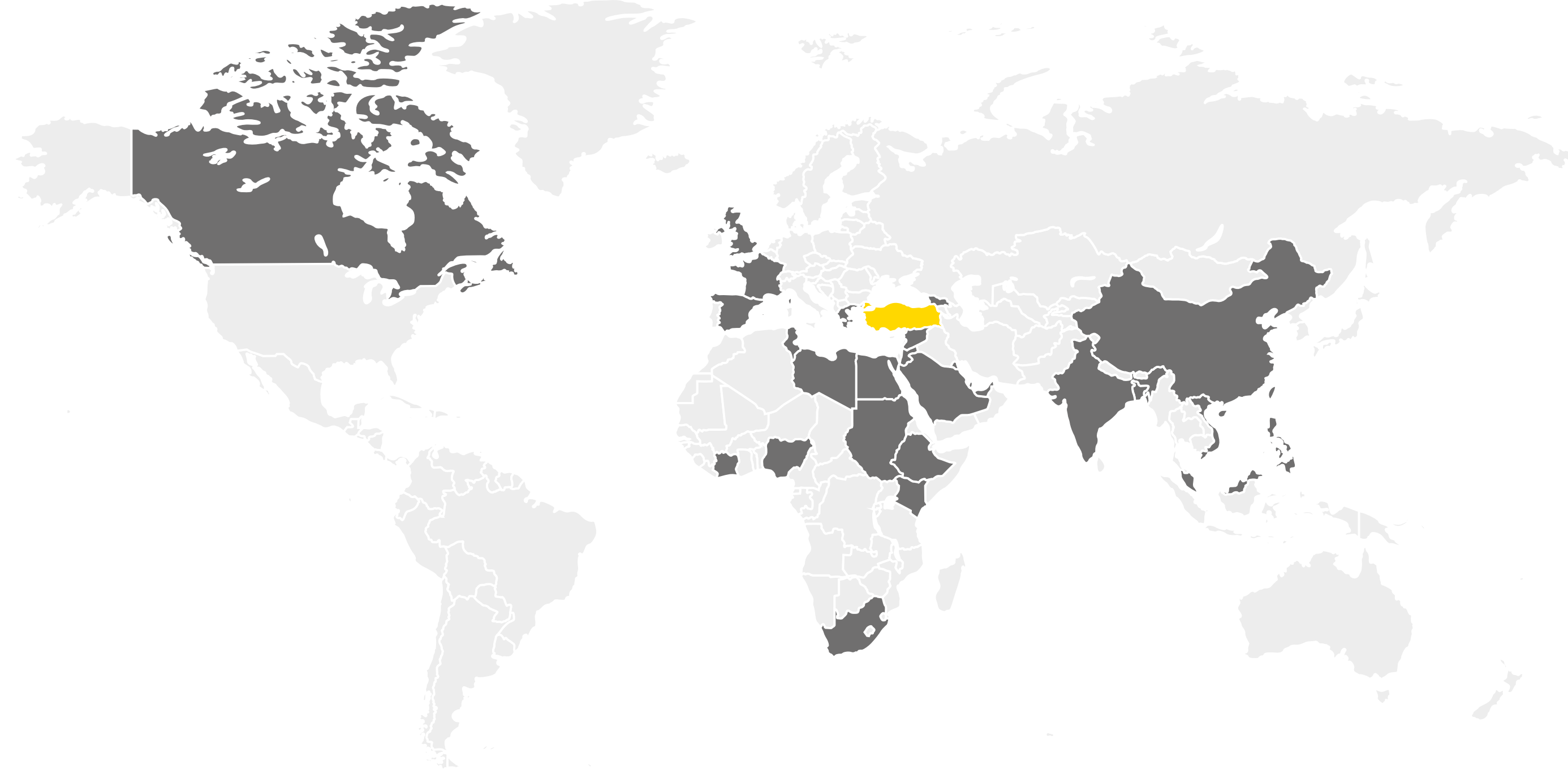


GateSet is committed to the protection of the environment and the health and safety of its employees and customers, human health and prevention of pollution. In line with this purpose, GateSet is implemented and maintains ISO 14001 Environmental Management System (EMS). We strive to conduct our activities in an environmentally sustainable manner, taking into consideration the complex and interconnected relationship of our ecosystem and we set goals for energy consumption, waste management, the use of natural resources, the sourcing of raw materials and product design.

For full text of EMS Policy, please contact customer-service@gateset.com.tr

ENVIRONMENTAL RESPONSIBILITY GATESET SECURITY SYSTEMS





GateSet is delivering solutions world-wide throughout more than 25 countries:

BANGLADESH, CANADA, CHINA, EGYPT, ETHIOPIA, FRANCE, GEORGIA, GREECE, INDIA, IVORY COAST, KENYA, KINGDOM OF SAUDI ARABIA, KUWAIT, LEBANON, LIBYA, NIGERIA, PHILIPPINES, QATAR, SINGAPORE, SOUTH AFRICA, SPAIN, SUDAN, SYRIA, TUNISIA, UNITED ARAB EMIRATES, UNITED KINGDOM, VIETNAM

WORLD-WIDE DISTRIBUTION GATESET SECURITY SYSTEMS



SOME PARTNERS AND CLIENTS
GATESET SECURITY SYSTEMS



ACCESS CONTROL SOLUTIONS
TURNSTILES ■ BARRIERS ■ ID SYSTEMS

 [Demo Video](#)

Click for Product Range Presentation Video (web-link)

PRODUCT RANGE GATESET SECURITY SYSTEMS

**PEDESTRIAN
ACCESS
CONTROL**



**VEHICLE
ACCESS
CONTROL**



**TICKETING
&
ID SYSTEMS**



Click on Product Range to Navigate Directly

PEDESTRIAN ACCESS CONTROL



Click on Range Category to Navigate Directly



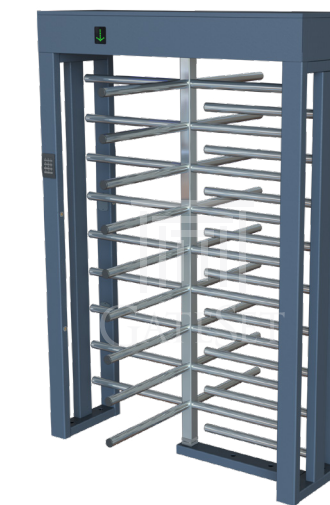
Waist Height
Trio Turnstiles



Motorized Swing
Gate Turnstiles



Speed
Gates



Full Height
Turnstiles

RANGE CATEGORY HIGHLIGHTS GATESET SECURITY SYSTEMS

[Browse All Products in This Range \(website\)](#)

[Back to Range Index](#)

SINGLE TRIPOD TURNSTILES GATESET SECURITY SYSTEMS



Classic Line
Single Leg Tripod Turnstile

GT-310 Series

- Recommended For:
- * Handling 2,000+ users / day
- Flat Top, Angled Top, Drop Arm Options

 [Datasheet](#)



Classic Line
Double Leg Tripod Turnstile

GT-320 Series

- Recommended For:
- * Handling 4,000+ users / day
- Flat Top, Angled Top, Drop Arm Options

 [Datasheet](#)



Busy Line
Single Leg Tripod Turnstile

GT-760 Series

- Recommended For:
- * Handling 10,000+ users / day
- Flat Top, Angled Top, Drop Arm Options

 [Datasheet](#)

DOUBLE TRIPOD TURNSTILES GATESET SECURITY SYSTEMS



Classic Line
Single Leg Double Tripod Turnstile

GT-3400 Series

- Recommended For:
- * Handling 4,000+ users / day
- Flat Top, Angled Top, Drop Arm Options

 [Datasheet](#)



Classic Line
Double Leg Double Tripod Turnstile

GT-3600 Series

- Recommended For:
- * Handling 8,000+ users / day
- Standard Flat Top, Drop Arm Option

 [Datasheet](#)

MOTORIZED VIP SWING GATES GATESET SECURITY SYSTEMS



Classic Line
Motorized VIP Swing Gate

GV-3000

- Steel Profile Arm
- Uni-Directional Operation
- Motorized Movement
- * Radar Sensor Integration (optional)

 [Datasheet](#)



Classic Line
Motorized VIP Swing Gate

GV-3100Series

- Flat Top, Angled Top Options
(Coherence with GT-3100 Series)
- Steel Profile Arm with Plexiglass Filling
- Bi-Directional Operation
- Motorized Movement
- * Access Control Integration (optional)

 [Datasheet](#)



Exclusive Line
Glass Arm VIP Swing Gate

GV-5000

- Plexiglass Arm
- Bi-Directional Operation
- Motorized Movement
- * 2 Channel Remote Control (optional)

 [Datasheet](#)

SPEED GATE TURNSTILES GATESET SECURITY SYSTEMS

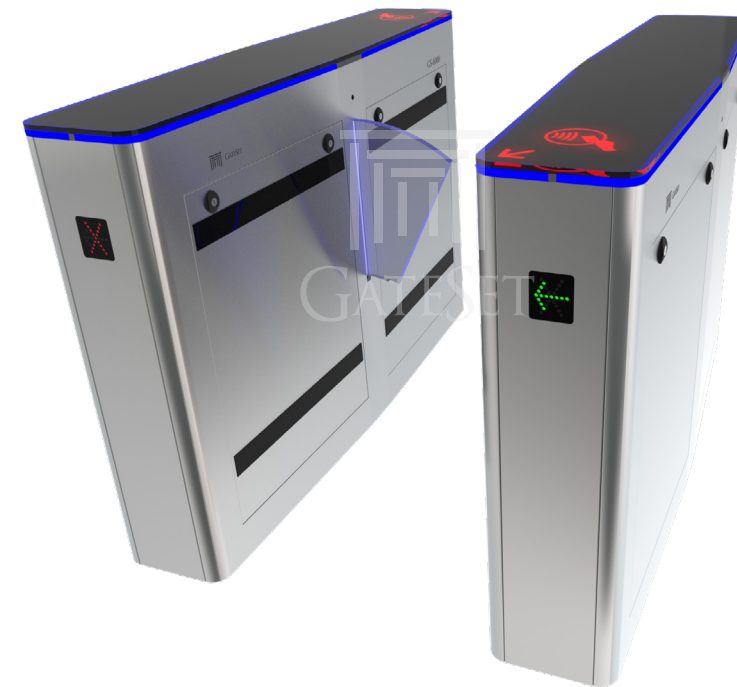


Exclusive Line Speed Gate Turnstiles

GS-3000

- Standard (550 mm) and Disabled (900 mm) Passages with same Case (Articulated Arm Design)
- Wings hide inside to Open Corridor
- 1000 mm Corridor Length (Compact Design)
- Optimum Passage Tracking with 5 Pairs of Industrial Optical Sensors
- Brushless DC Motor and Controlled by PLC

 [Datasheet](#)

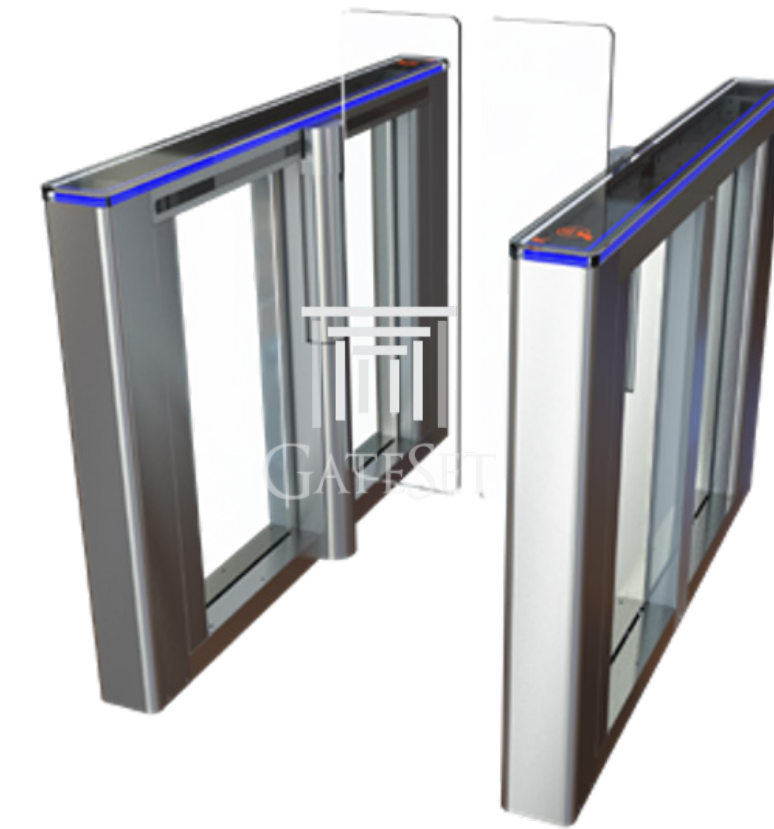


Corporate Line Speed Gate Turnstiles

GS-6000 Series

- Standard (550 mm) and Disabled (900 mm) Passages with same Case (Articulated Arm Design)
- Wings hide inside to Open Corridor
- 1450 mm Corridor Length
- Effective Passage Tracking with 7 Pairs of Industrial Optical Sensors
- Brushless DC Motor and Controlled by PLC

 [Datasheet](#)



Smart Line Speed Gate Turnstiles

GS-4000

- Standard (550 mm) and Disabled (900 mm) Passages
- Full Height Wings Swing to Open Corridor
- 1400 mm Corridor Length
- Effective Passage Tracking with 8 Pairs of Industrial Optical Sensors
- Servo Motor and Controlled by Omron PLC

 [Datasheet](#)

[Browse All Products in This Category \(website\)](#)

[Back to Range Category](#)



FULL HEIGHT TURNSTILES GATESET SECURITY SYSTEMS



Industrial Line Full Height Turnstiles

GF-4400 Series

- 4 Wings Passage with Steel Arms
- New Modular Case Design for Compact Installations
- 304 SS, 316 SS and Powder Coated Material Options
- Passage Tracking Sensors (Optional)
- Fully HCIS Compliant Version Available
- Designed for Heavy Duty Industrial Usage

 [Datasheet](#)

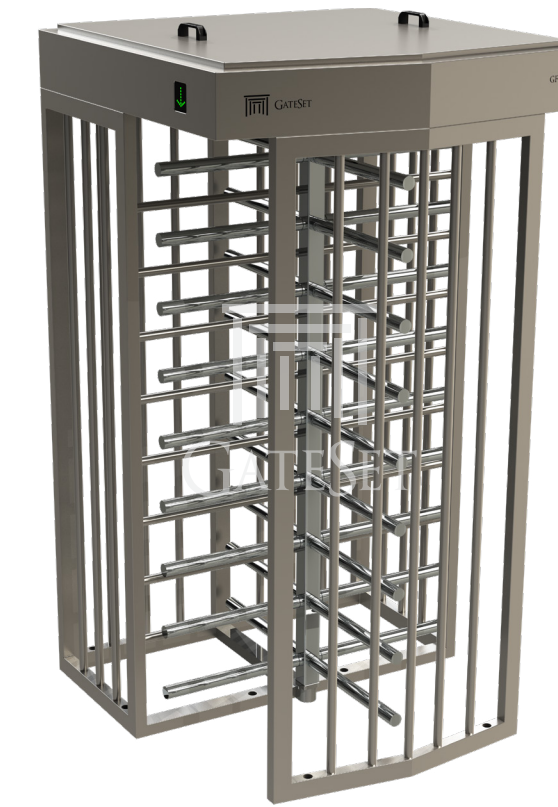


Corporate Line Double Full Height Glass Turnstiles

GF-6600 Series

- 3 Wings Double Passage with PlexiGlass Arms
- Strong Polycarbonate Side Panels
- 3 State Passage Indicator LEDs
- Elegance Combined with High Security
- Designed for Indoor Usage at Office Floors with no Security Supervision

 [Datasheet](#)



Secure Line Full Height Turnstiles

GF-8400

- 4 Wings Passage with Steel Arms
- Cage Type Case Design for Maximum Security
- 304 SS, 316 SS and Powder Coated Material Options
- Passage Tracking Sensors (Optional)
- Fully HCIS Compliant Version Available
- Designed for Heavy Duty Industrial Usage

 [Datasheet](#)

[Browse All Products in This Category \(website\)](#)

[Back to Range Category](#)



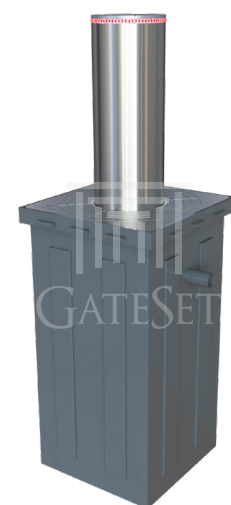
VEHICLE ACCESS CONTROL



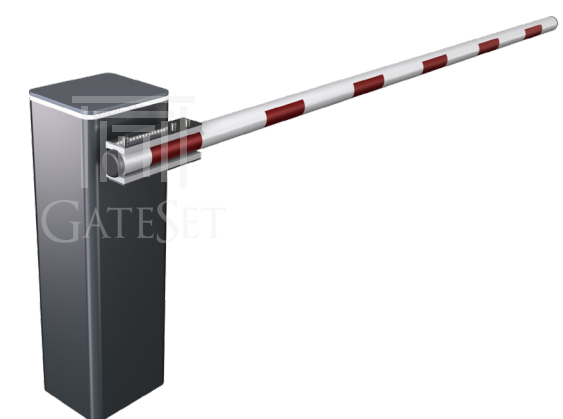
Click on Range Category to Navigate Directly



Hydraulic
Road Blockers



Automatic and Static
Rising Bollards



Rising Arm
Barriers



Vehicle
Gates

RANGE CATEGORY HIGHLIGHTS GATESET SECURITY SYSTEMS

[Browse All Products in This Range \(website\)](#)

[Back to Range Index](#)

HYDRAULIC ROAD BLOCKERS GATESET SECURITY SYSTEMS



K12 Rated* Hydraulic Road Blockers

GSR-X Series

- Conventional Road Blocker
- 3 Meter Blocking Width - 1 Meter Obstacle Height
- * IWA14-1:2013 Blocker V/7200[N2A]/80/90:0.0 Certified
- * Zero Penetration, Zero Displacement at Foundation
- * Full Operational after a 1820.2 kJ Impact
- Position and Speed Control, ECU with PLC

 [Datasheet](#)

 [Crash Test Video](#)



K12 Rated* Shallow Mount Road Blockers

GSR-SX Series

- Shallow Mount (400 mm) Road Blocker
- 3 Meter Blocking Width - 1.2 Meter Obstacle Height
- * Certificate Pending on IWA14-1:2013 N3C P1
- * Successfully past CAE Crash Analysis (report available)
- * Impact Resistance: 7,500 KG @ 80 km/h
- Position and Speed Control, ECU with PLC

 [Datasheet](#)



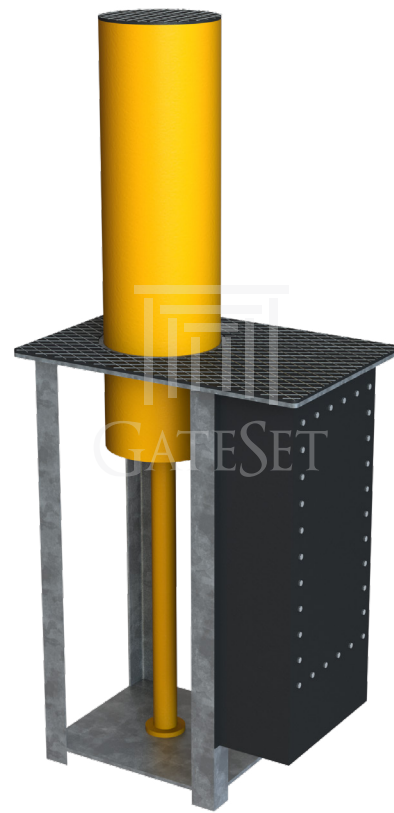
K8 Rated* Shallow Mount Road Blockers

GSR-SL Series

- Shallow Mount (300 mm) Road Blocker
- 3 Meter Blocking Width - 90 cm Obstacle Height
- * Certificate Pending on IWA14-1:2013 N2B P1
- * Successfully past CAE Crash Analysis (report available)
- * Impact Resistance: 7,500 KG @ 65 km/h
- Position and Speed Control, ECU with PLC

 [Datasheet](#)

AUTOMATIC & STATIC BOLLARDS GATESET SECURITY SYSTEMS

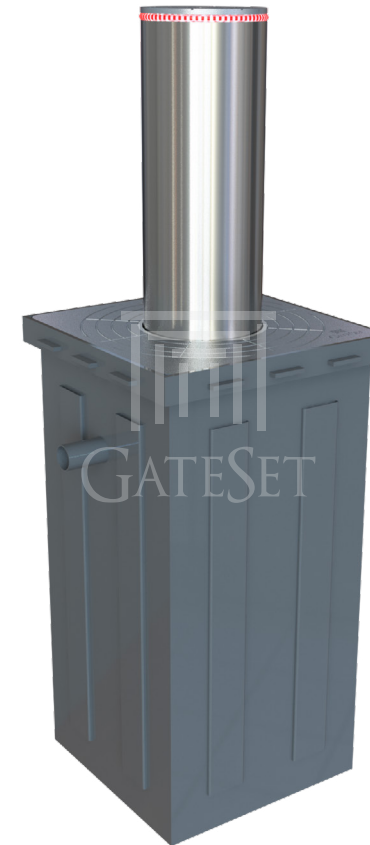


Traffic Regulator Hydraulic Rising Bollards

GSB6000 Series

- State-of-the-art Internal Hydraulic Power
- 220 mm Diameter - 60 cm Obstacle Height
- Ultra Silent and Fast Operation
- Easy Installation and Low Maintenance
- Compatible for Intensive Usage

 [Datasheet](#)



K8 Rated* Hydraulic Rising Bollards

GSB7000 Series

- State-of-the-art Internal Hydraulic Power
- 220 mm Diameter - 60 cm Obstacle Height
- * CAE Passed for IWA14-1:2013 N2B P1 @ 65 km/h
- Ultra Silent and Fast Operation
- Easy Installation and Low Maintenance
- Compatible for Intensive Usage

 [Datasheet](#)



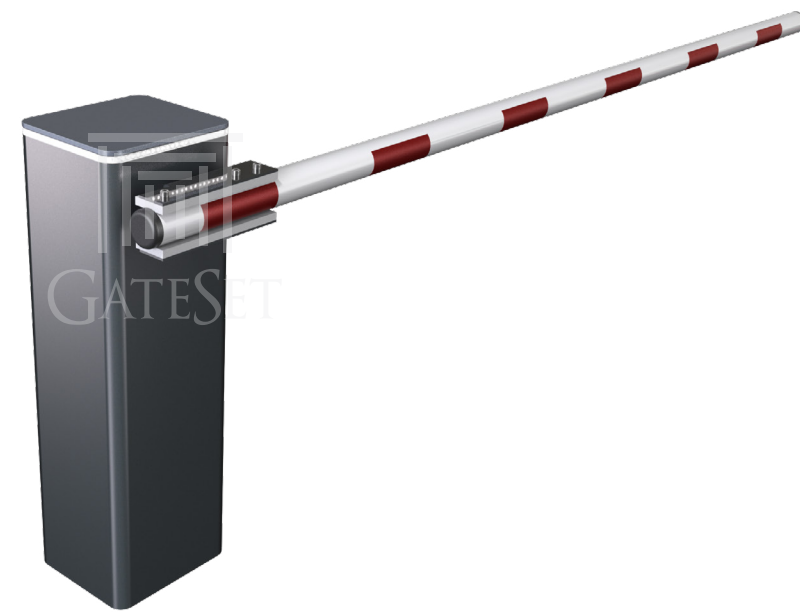
K12 Rated* Static Bollards

GFB9000 Series

- Shallow Mount (500 mm) Static Bollard
- 355 mm Diameter - 1.1 Meters Obstacle Height
- Certificate Pending on IWA14-1:2013 N3C P1
- Successfully past CAE Crash Analysis (report available)
- Impact Resistance: 7,500 KG @ 80 km/h

 [Datasheet](#)

RISING ARM BARRIERS GATESET SECURITY SYSTEMS

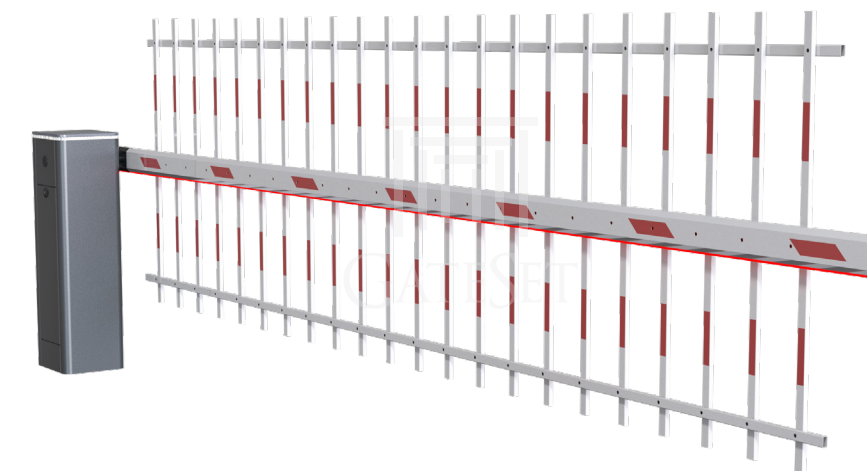


New Release Rising Arm Barriers

GTRSeries

- 3 to 6 Meters Arm Lengths
- From 0.6 to 2.5 Second Operation Speed
- Frequency Inverter Controlled Gear Motor
- Smooth Operation Precise Speed Control
- Fully HCIS Compliant Version Available

 [Datasheet](#)



Fenced Arm Rising Arm Barriers

GTR-FSeries

- 3 to 6 Meters Arm Lengths
- Fenced Arm to Provide Physical Security
- From 3 to 6 Second Operation Speed
- Frequency Inverter Controlled Gear Motor
- Smooth Operation Precise Speed Control

 [Datasheet](#)

VEHICLE GATES

GATESET SECURITY SYSTEMS

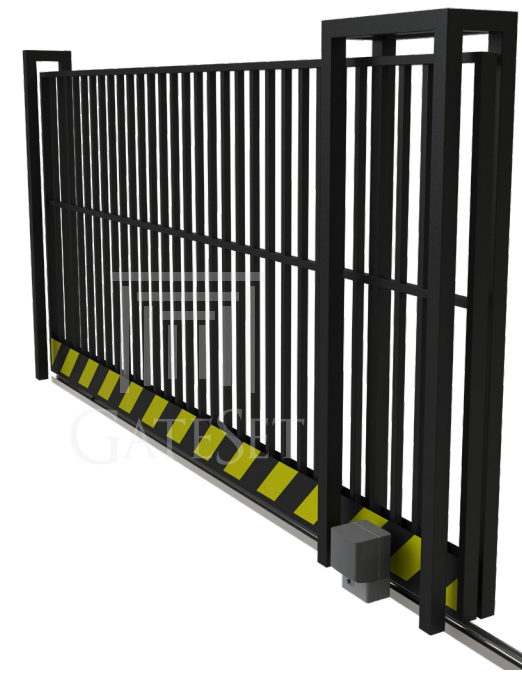


K12 Rated* Sliding Vehicle Gates

GSC-S Series

- High Impact Rated Sliding Vehicle Gate
- 6 Meter Blocking Width - 2 Meters Obstacle Height
- * Certificate Pending on IWA14-1:2013 N3C P1
- * Successfully past CAE Crash Analysis (report available)
- * Impact Resistance: 7,500 KG @ 80 km/h

 [Datasheet](#)



Perimeter Security Sliding Vehicle Gates

GSG-S Series

- Sliding Gate with Motorized Movement
- Intermediate Widths from 3 Meters to 6 Meters
- Intermediate Heights from 1 Meter to 3 Meters
- Optional Top Finishing with Spikes and Linear Razor
- HCIS Compliant Version is Available

 [Datasheet](#)



Perimeter Security Swing Vehicle Gates

GSG-L Series

- Automatic Movement with Linear Actuator
- Single Wing or Synchronized Double Wing Options
- Intermediate Widths from 4 Meters to 8.5 Meters
- Intermediate Heights from 1 Meter to 3 Meters
- Optional Top Finishing with Spikes and Linear Razor
- HCIS Compliant Version is Available

 [Datasheet](#)

**TICKETING
&
ID SYSTEMS**



Browse Next Page

**RANGE CATEGORY HIGHLIGHTS
GATESET SECURITY SYSTEMS**

Browse All Products in This Range (website)

[Back to Range Index](#)

ACCESS CONTROL SOLUTIONS

GATESET SECURITY SYSTEMS



Integrated LPR Under Vehicle Surveillance System

UVS Series

- Basler Line Scan with 4096 pixels resolution,
- Lens: 3.5 Aperture Range 180 degrees Angle of View
- PLC Control
- Integrated License Plate Recognition System

 [Datasheet](#)



ID Systems Face Recognition System

FRS Series

- ID upload in minimal time with Web-based interface
- Simultaneous face recognition: Processing Crowds
- Not affected by appearance alterations
- Blacklist function triggers a silent or audible alarm
- Whitelist function for VIP Handling

 [Datasheet](#)



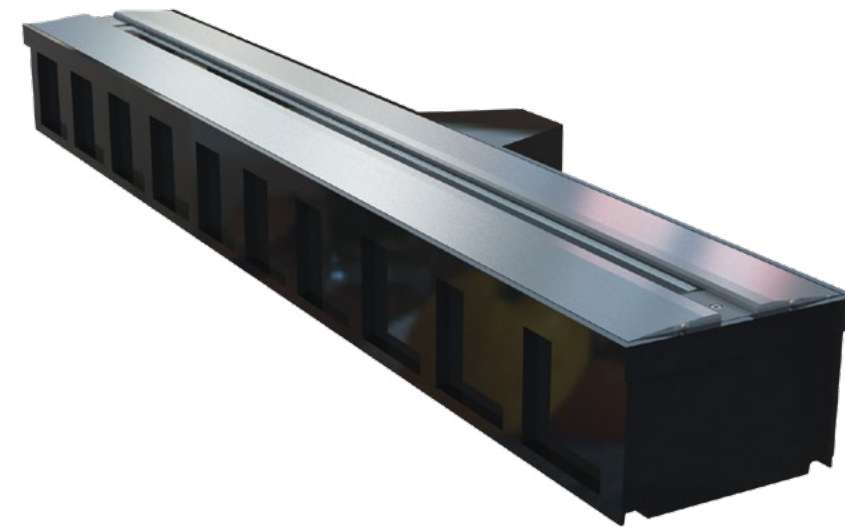
Integrated Solution Parking Management System

GMS Series

- Parking Ticket Dispenser Machines
- Automatic Available Lot Indicators
- Management Software
- Ticket Reading Machines
- Turnkey Solutions

 [Datasheet](#)

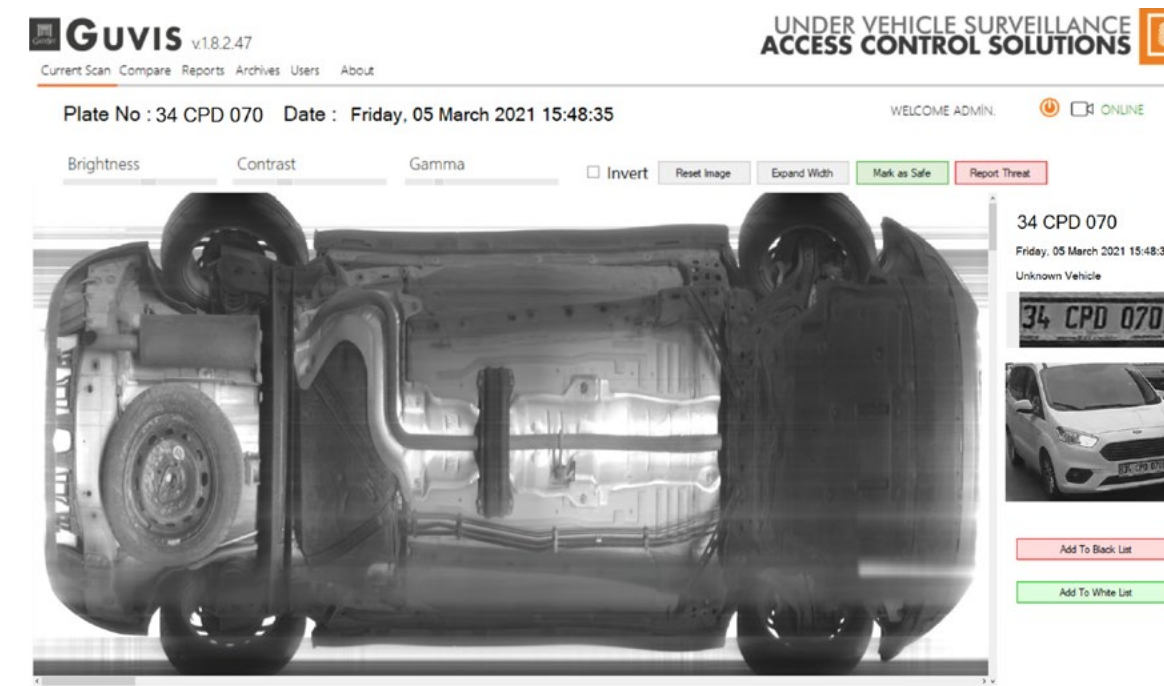
UNDER VEHICLE SURVEILLANCE GATESET SECURITY SYSTEMS



License Plate Recognition Integrated Under Vehicle Surveillance System

UVS Series

- 4096-pixel high definition with line scanning feature
- Wide scanning angle with Fisheye Lens
- PLC control, scanning time of below 3 seconds
- Compact and waterproof case design
- Constant monitoring for leakage and humidity level
- Humidity regulation via active air conditioning system
- Automatic anti-fogging system



Clear and Fast Imaging Scanning Screen

GUVIS Software

- GUVIS GateSet Under Vehicle Imaging System
- State-of-the-art Imaging Algorithm
- Imaging time of below 3 seconds
- Detailed Inspection with Advanced Image Settings Feature



Image Comparing Feature Comparison Screen

GUVIS Software

- Integrated Plate Recognition System
- Comparison of the vehicle's current entry image and the last "safe" entry image
- Detailed Inspection via Synchronized Zoom and Image Adjustment



ACCESS CONTROL SOLUTIONS
TURNSTILES ■ BARRIERS ■ ID SYSTEMS

Sales Inquiries: export@gateset.com.tr
Technical Inquiries: technical@gateset.com.tr
Project Related Inquiries: project@gateset.com.tr

P 00902122278020

Kozyatagi Mah. Bayar Cad. No:72/7 Kadıköy 34742 Istanbul/TURKIYE

www.gateset.com.tr

CONTACT
GATESET SECURITY SYSTEMS

[Back to Range Index](#)