



BimDesk

Performance Builders





BimDesk

Performance Builders

Presentation

- Who & Where
- Why & What
- Team & Contracting
- Projects
- Organization
- Master pricing 2018
- Contact



WHO & WHERE

BIMDESK is a **CAD & BIM Outsourcing** company in Central America

Empowering **Design, Engineering, Timing & Costing** dimensions

for **Architecture, Engineering & Construction** Projects (AEC)

driven by Social Impact & Innovation

Atlanta

Customer Management Office

- Sales Rep in Atlanta & Tampa
- Direct connexions between Managua, Miami, Atlanta, Houston, NYC & Los Angeles
- Soon LLC in Atlanta



Managua



Project management Office

- 28 seniors qualified consultants
- US Codes knowledge
- Softwares empowerment
- Ready for rocket growth with 100 consultants in 18 months
- BIMDESK SA, 100% private Company by european owner



WHY & WHAT

YOUR PROBLEM

- You need to **reduce 50% your costs of sales** in Design & Engineering
- But expect **experimented people** respecting US codes
- Find **reliable & flexible resources** to manage peak seasons,
- Find at the same place **Drafter, Designer, Engineer** and **Construction consultant**
- With **real-time** Project management planning



OUR SOLUTION

- CAD&BIM Experts from **1,600US\$/month**
- Many resources available on the market with **experience on the US codes**,
- Pricing/ month or sqm as you wish
- **Team leaders** for each customer
- 1-stop-shop for AEC leaders
- **Miami Time Slot**



TEAM & CONTRACTING

ARCHITECTURE

- Drafter
- Render maker
- Designer

ENGINEERING

- Structural designer
- M.E.P including HVAC
- Environmental experts

CONSTRUCTION

- Take Off
- Budget planner
- Project planner
- Conflict resolution expert
- Risk manager
- Re-engineering expert

HOUR/WEEK/MONTH PRICING

- We evaluate the level of **complexity**,
- Evaluate the weekly **workload**,
- Define the KPI for **delivery**

*Starting in 1,600US\$/month for a junior**

PROJECT PRICING

- Evaluating the level of **complexity**
- Define the delivery **planning**
- Case by case we define a **pricing per sq/meter or ft/meter**

3D = object model, 4D + time (shedule), 5D + cost (budget & margin),
6D + operation (project management), 7D + sustainability (green)

* Master pricing at the end of the presentation



PROJECTS



Residential

Villas
Apartments
Condominium
Social Housing



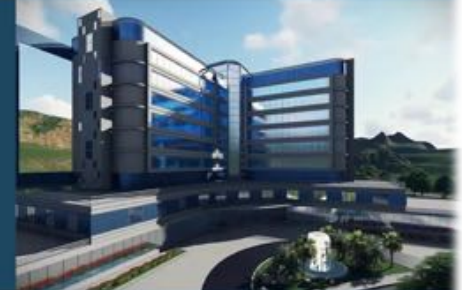
Commercial

Offices
Commercial centers
Public buildings



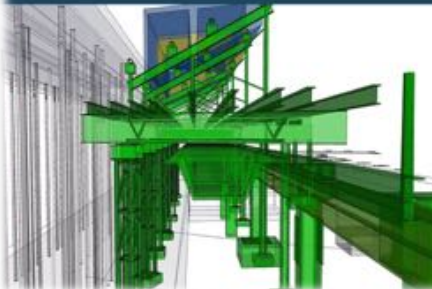
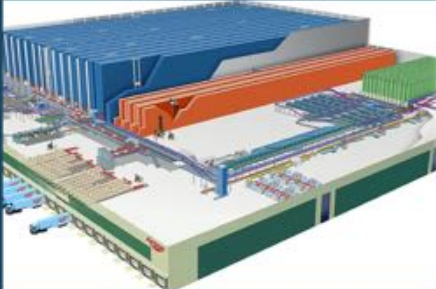
Institutional

Hospitals/Clinics
Universities/Schools
Civic centers



Industrial

Warehouse
Plants
Logistic parks and more



Special Steel structures

Light (stairs, balconies...)
Heavy (Pressure vessels, Tanks,
Heavy doors...)



Infrastructures

Bridges
Roads
Airports
Marinas



CUSTOMER ORIENTED ORGANIZATION





PORTAFOLIO – RENDERS EXTRACT



Geoffroy VILBERT

Founding Partner of OPTEAMUM Associates in France (2008) and BIMDESK in Nicaragua (2018), he has more than 25 years of professional experience in corporate strategy specializing in alliance management. Advisor for corporate and family companies in Europe, USA and Central America, his excellence is about designing and implementing strategies in complexe situations.

Geoffroy Vilbert has worked in more than 15 different countries as strategist and project director for companies such as Securitas, Delphi, Heinz, Carglass, Saint-Jean Industrie, Bollore, Delfingen, among others.

He is graduated from the Military Academy of France as Military Air Defense Controller with emphasis on strategy, risk management and crisis resolution.

He is also certified in "Global Economy" at Georgetown University (USA) and in Alternative Investment Management at the University of Edinburgh (Scotland). He is also President of the France-Nicaragua Chamber of Commerce.

Last AEC projects, Geoffroy has driven

- DELFINGEN (Nicaragua): automotive industry, plant construction from A2Z
- INMSA ARGO (Honduras): Steel manufacturing industry, strategic planning, multi-consortium management, bid management
- SAINT JEAN INDUSTRIE (Mexico): Automotive industry, public incentive management, fund raising and construction planning, bid management
- SATOL (Ivory cost) : agrobusiness industry strategic planning, fund raising and starch plant construction from A2Z





CONTACT



BimDesk

Performance Builders

Geoffroy VILBERT

CEO

+1 (470) 372-1538

+505 8708-2412

geff@bimdesk.net

www.bimdesk.net



BimDesk

Performance Builders

Ari Ana Guerrero Q.

Project Management Officer

+1 (470) 372-1538

+505 8852-1557

ariana@bimdesk.net

www.bimdesk.net

BIMDESK SA

Plaza Bolívar No. 2.
De Los semáforos de Enel
central 300 mts al lago

Managua – Nicaragua

Contact@bimdesk.net

Tel: +1 (470) 372-1538

Soon registered as
BIMDESK LLC in Atlanta
(GA-USA)